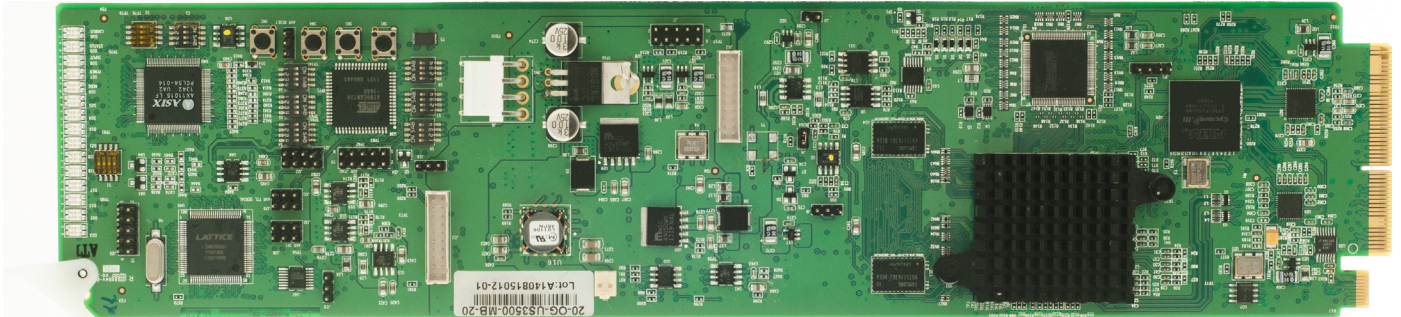


# openGear

## OG-US-3500

Universal Scan Converter/Scaler with Genlock



OG-US-3500-MB

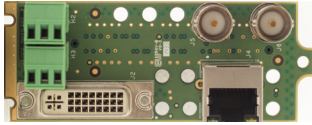
### Key Features

- OGX/3.0 card-based form factor
- Dashboard control enables
- Supports HDMI/DVI/YPbPr/CVBS input
- Stereo analog audio input
- Dual SDI outputs
- Supports Genlock via openGear frame
- Low power consumption
- Output: 720P, 480/576P, 480i/576i, 1080i, 1080P
- Output frequency: 50, 59.94 and 60Hz
- 5 year limited warranty

# OPENGEAR

## OG-US-3500

### OG-US-3500RM



### Rear Module (2 slots)

- 1x DVI-U input
- 2x SDI outputs
- 1x analog audio input (3 Pin)
- 1x RS-232 Input (3 Pin)

### Standard Accessories

- 1x VGA-DVI-U adapter
- 1x HDMi-DVI-U adapter
- 1x YPbPr-DVI-U adapter

### How to Order

#### OG-US-3500-SET-1

OG-US-3500-MB +  
OG-US-3500-RM

### Related Products

#### OGX-FR-CN-P

openGear X frame with  
advanced network card

#### OG-US-4000-SET-1

openGear based Universal  
Scaler with genlock

#### OG-DA-HDTV-SDI-II-SET-1

openGear based HDMI to SDI  
converter without scaler

#### OG-SDI-HDTV-SET-1

openGear based SDI to HDMI  
converter without scaler

## Specifications

<b>Input</b>	HDMI, DVI, VGA, YPbPr, Composite	<b>Output</b>	2 x SDI
<b>Control</b>	Dashboard	<b>Genlock</b>	Analog black burst via BNC

### Supported Input Resolution for DVI\_RGB, DVI\_444, DVI\_422, HDMI 8bit\_RGB, HDMI 8bit\_444, HDMI 8bit\_422

800x600@60Hz	1024x768@60Hz	1280x768@60Hz	1280x800@60Hz
1280x960@60Hz	1280x1024@60Hz	1360x768@60Hz	1366x768@60Hz
1440x900@60Hz	1400x1050@60Hz	1600x1200@60Hz	1680x1050@60Hz
720x480i@59.94Hz (No DVI)	720x576i@50Hz (No DVI)	720x480P@59.94Hz	720x576P@50Hz
1280x720@50/60Hz	1920x1080i@ 50/60Hz	1920x1080P@50/60Hz	

### Supported Input Resolution for DVI, HDMI 8/10 bit RGB/YPbPr

640x480@60 Hz	800x600@60Hz	1024x768@60Hz	1280x720@60Hz
1280x768@60Hz	1280x800@59.94Hz	1280x960@60Hz	1280x1024@60Hz
1360x768@60Hz	1440x900@60Hz	1400x1050@60Hz	1600x1200@60Hz
1680x1050@60Hz	1920x1200 (RGB)	1920x1080@60Hz	