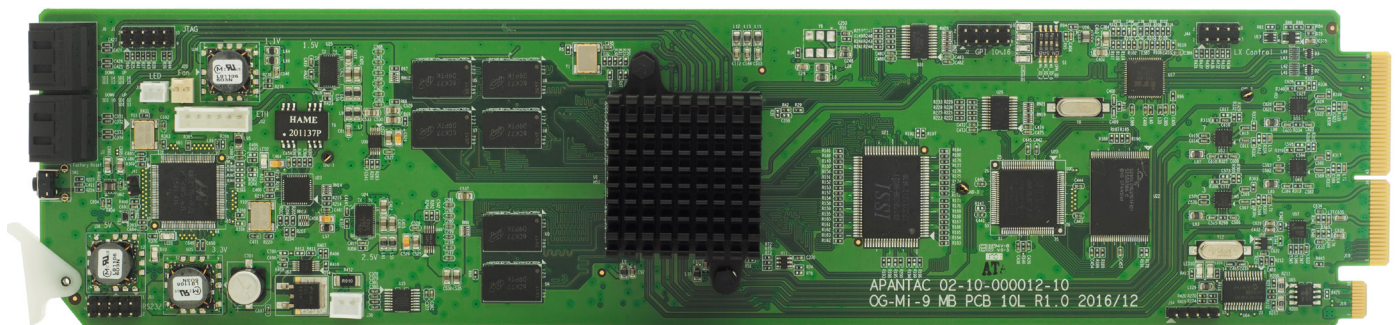


# openGear

## OG-Mi-9#

9 x 2 SDI Multiviewer Card with HDMI and SDI Output (dual Outputs)



OG-Mi-9#-MB

### Key Features

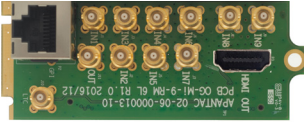
- OGX/3.0 card-based form factor
- Low latency - single frame processing delay
- 9 auto-detect 3G(Level A/B)/HD/SD-SDI inputs
- Low power consumption - 15W
- Windows can be sized and moved freely
- Decode up to 16 embedded audio per SDI input
- Ethernet for configuration, dynamic labels & Tallies (TSL)
- Standalone labels, customizable logo
- 9 GPUs for tallies, count up/down trigger or preset recall
- Built-in analog/digital clocks can synn with LTC/NTP
- Border can be turned on or off
- Two sets of safe area makers
- Visual alarm tags for video/audio alarm
- HDMI and SDI outputs have embedded stereo audio pair
- 5 year limited warranty



# OPENGEAR

## OG-Mi-9#

### OG-Mi-9#-RM



### Rear Module (2 slots)

- 9x HDBNC Input for SDI Inputs
- 1x HDBNC Output for SDI Outputs
- 1x HDMI Output
- 1x RJ50 for GPI/Tally
- 1x HDBNC for LTC input

### Standard Accessories

- RJ50 to DB9 (for GPI)
- DB9 to Terminal Block (for GPI)

### Optional Accessories

#### 11x HD-BNC-BNC-F

High density BNC to regulate BNC (female) adapter cable  
1 ft/30cm

### Related Products

#### OGX-FR-CN-P

openGear X frame with advanced network card

#### OG-Mi-9-SET-1

openGear based 9 input SDI multiviewer with SDI, HDMI outputs

#### OG-Mi-9+-SET-1

openGear based 9 input SDI multiviewer with SDI, HDMI outputs

### How to Order

#### OG-Mi-9#-SET-1:

OG-Mi-9#-MB + OG-Mi-9#-RM

#### OG-Mi-9#-SET-2:

OG-Mi-9#-MB + OG-Mi-9#-RM + 11 HD-BNC to BNC cable

## Specifications

<b>Inputs</b>	9x 3G (level A/B)/HD/SD-SDI	<b>Video Output</b>	Independent 1 x HDMI and 1x SDI
<b>Connector Type</b>	HD-BNC	<b>Audio Output</b>	Embedded stereo audio pair
<b>Total Windows</b>	Up to 18	<b>Output Resolution</b>	HDMI: 1920x1080P 50/59.94 Hz SDI: 1080P/1080i 50/59.94 Hz
<b>Aspect Ratios</b>	16:9 for all or 4:3 for Standard definition		
<b>Serial Digital</b>	SMPTE 424M, 292M, 259M, supports 525i59.94, 626i50, 720p50, 720p 59.94, 720p60, 1080i50, 1080i59.94, 1080i60, 1080PsF25, 1080PsF29.97, 1080PsF30, 1080p50, 1080p59.94, 1080p60 Level A/B	<b>Latency</b>	1 frame
		<b>On Screen Display</b>	Borders, Static and Dynamic Labels/UMDs, Tally LEDs, Alarm Tags, Clocks and Logos
		<b>SDI Color Encoding</b>	10 bit 4:2:2
<b>Equalization</b>	120m at 2.97 Gbps, 140m at 1.48 Gbps, 400m at 270 Mbps with Belden 1694A	<b>GPI</b>	9 for tally or AXP (ASCII command)
		<b>Serial Port</b>	N/A
<b>Return Loss</b>	> 15db up to 1.485 Gbps > 10db up to 3G	<b>IP</b>	100 Base-T for control and configuration and TSL, AXP protocol
<b>Embedded Audio</b>	SMPTE-272M-A	<b>Supported IP Protocols</b>	TSL 3.1 for dynamic tallies and labels, Optional: Utah and PESA router protocols
<b>Alarms</b>	No audio, audio high/low, no video, video format display	<b>Electrical</b>	15 W, 90 - 250 V 50/60 Hz
		<b>EMI/RFI</b>	Complies with FCC Part 15, Class A, CE, EU EMC, C-tick