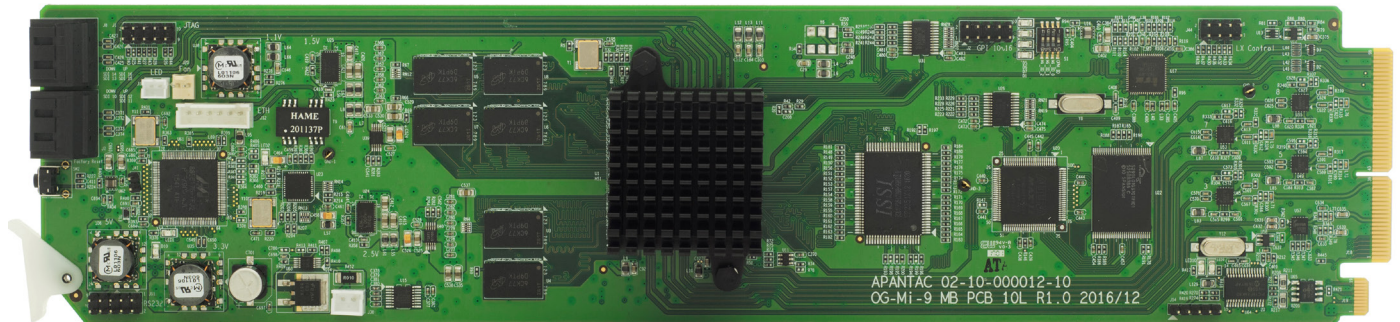


openGear

OG-Mi-9+

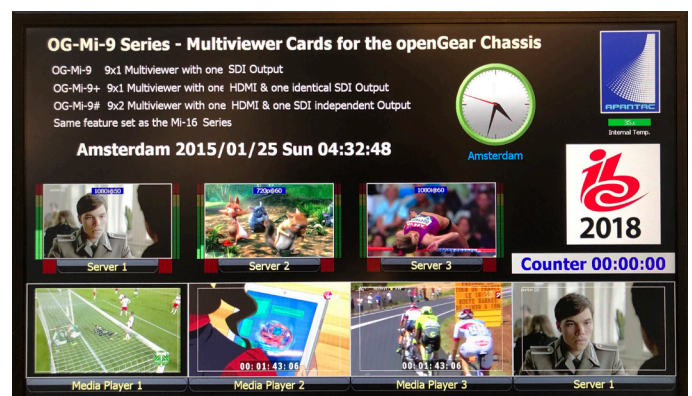
9 x 1 SDI Multiviewer Card with HDMI and SDI Output



OG-Mi-9+-MB

Key Features

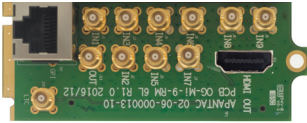
- OGX/3.0 card-based form factor
- Low latency - single frame processing delay
- 9 auto-detect 3G(Level A/B)/HD/SD-SDI inputs
- Low power consumption - 15W
- Windows can be sized and moved freely
- Decode up to 16 embedded audio per SDI input
- Ethernet for configuration, dynamic labels & Tallies (TSL)
- Standalone labels, customizable logo
- 9 GPIs for tallies, count up/down trigger or preset recall
- Built-in analog/digital clocks can sync with LTC/NTP
- Border can be turned on or off
- Two sets of safe area makers
- Visual alarm tags for video/audio alarm
- HDMI and SDI outputs have embedded stereo audio pair
- 5 year limited warranty



OPENGEAR

OG-Mi-9+

OG-Mi-9+-RM



Rear Module (2 slots)

- 9x HD-BNC Input for SDI Inputs
- 1x HD-BNC Output for SDI Outputs
- 1x HDMI Output
- 1x RJ50 for GPI/Tally
- 1x HD-BNC for LTC input

Standard Accessories

- RJ50 to DB9 (for GPI)
- DB9 to Terminal Block (for GPI)

Optional Accessories

11x HD-BNC-BNC-F

High density BNC to regulate BNC (female) adapter cable
1 ft/30cm

Related Products

OGX-FR-CN-P

openGear X frame with advanced network card

OG-Mi-9-SET-1

openGear based 9 input SDI multiviewer with HDMI, SDI outputs

OG-Mi-9#-SET-1

openGear based 9 input SDI multiviewer with dual outputs

OG-Mi-16-SET-1

openGear based 16 input SDI multiviewer

OG-MiniQ-SET-1

openGear based cascadable SDI multiviewer

How to Order

OG-Mi-9+-SET-1:

OG-Mi-9+-MB + OG-Mi-9+-RM

OG-Mi-9+-SET-2:

OG-Mi-9+-MB + OG-Mi-9+-RM + 11 HD-BNC to BNC cable

Specifications

Inputs	9x 3G (level A/B)/HD/SD-SDI	Video Outputs	1 x HDMI/DVI 1 x SDI
Connector Type	HDBNC	Audio Output	Embedded HDMI and SDI
Total Windows	9	Output Resolution	1920x1080P 50/60Hz
Serial Digital	3G/HD/SD-SDI in 50/59.94/60Hz	On Screen Display	Borders, Labels, Tallies, Audio meters, Alarm tags, Safe area markers
Equalization	120m at 2.97 Gbps, 140m at 1.48 Gbps, 400m at 270 Mbps with Belden 1694A	GPI	9 for tally or AXP (ASCII command)
Return Loss	> 15db up to 1.485 Gbps > 10db up to 3G	Serial Port	N/A
Embedded Audio	SMPTE-272M-A	IP	100 Base-T, TSL, AXP_Lite protocol
Alarms	No audio, audio high/low, no video, video format display	Electrical	15 W