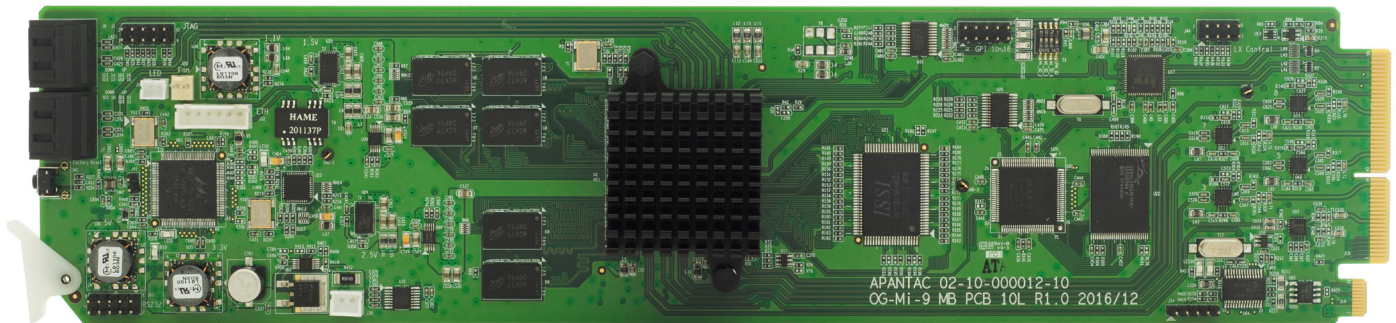


openGear

OG-Mi-16#

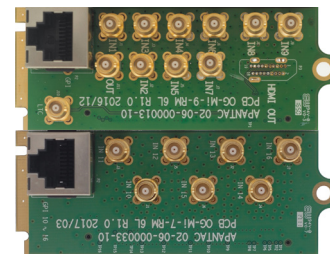
16 x 2 SDI Multiviewer Card with HDMI and SDI Output (dual outputs)



OG-Mi-16#-MB

Key Features

- OGX/3.0 card-based form factor
- Low latency - single frame processing delay
- 16 x auto-detect 3G (Level A/B)/HD/SD-SDI inputs
- 2 independent outputs: 1 x HDMI and 1 x SDI
- Low power consumption - 20W
- Windows can be sized and moved freely
- Decode up to 16 embedded audio per SDI input
- Ethernet for configuration, dynamic labels and Tallies (TSL)
- Standalone labels, customizable logo
- 16 GPIs for tallies, count up/down trigger or preset recall
- Built-in analog/digital clocks can sync with LTC/NTP
- Borders can be turned on or off
- Two sets of safe area makers
- Visual alarm tags for video/audio alarm
- HDMI and SDI outputs with embedded stereo audio pair
- 5 year limited warranty



OG-Mi-16#-MB (4 slots)

- 16 x HD-BNC input for SDI inputs
- 1 x HD-BNC output for SDI outputs
- 2 x RJ50 for GPI/Tally
- 1 x HDMI output
- 1 x HD-BNC for LTC input

Standard Accessories

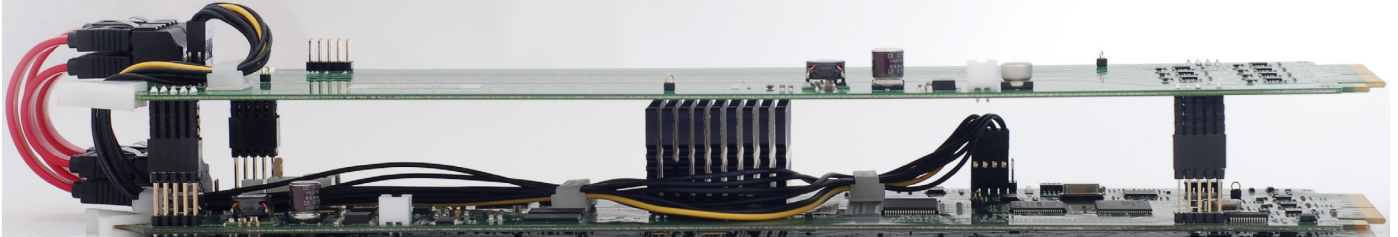
- RJ50 to DB9 (for GPI)
- DB9 to Terminal Block (for GPI)

Optional Accessories

- 18 x HD-BNC to BNC cable

OPENGEAR

OG-Mi-16#



OG-Mi-16#-MB

How to Order

OG-Mi-16#-SET-1:

OG-Mi-16#-MB + OG-Mi-16#-RM

OG-Mi-16#-SET-2:

OG-Mi-16#-MB + OG-Mi-16#-RM + 11 HD-BNC to BNC cable

Specifications

| | | | |
|-----------------------|--|--------------------------|---|
| Inputs | 16x 3G (level A/B)/HD/SD-SDI | Video Outputs | 1x SDI and 1 x HDMI |
| Connector Type | HD-BNC | Audio Output | Embedded HDMI and SDI |
| Total Windows | 16 | Output Resolution | 1920x1080P 50/60Hz |
| Serial Digital | 3G/HD/SD-SDI in 50/59.94/60Hz | On Screen Display | Borders, Labels, Tallies, Audio meters, Alarm tags, Safe area markers |
| Equalization | 120m at 2.97 Gbps, 140m at 1.48 Gbps, 400m at 270 Mbps with Belden 1694A | GPI | 16 inputs with RJ50 - DB9 connector |
| Return Loss | > 15db up to 1.485 Gbps > 10db up to 3G | Serial Port | N/A |
| Embedded Audio | SMPTE-272M-A | IP | 100 Base-T, TSL, AXP_Lite protocol |
| Alarms | No audio, audio high/low, no video, video format display | Electrial | 20 W |