

APANTAC

Product

openGear Reference Guide

Table of Contents

Mutiviewers

OG-MicroQ	6 - 7
OG-MiniQ	8 - 9
OG-MiniDE	10 - 11
OG-MiniDL-X+X	12 - 13
OG-Mi-9	14 - 15
OG-Mi-9+	16 - 17
OG-Mi-9#	18 - 19
OG-Mi-16#	20 - 21

KVM

OG-KM	24 - 25
OG-KVM-IP-Tx	26 - 27

Distribution Amplifiers/Splitters, Converters, Scalers

OG-DA-HDTV-SDI-UHD	30 - 31
OG-DA-SDI-HDTV-UHD	32 - 33
OG-DA-HDTV-SDI-II	34 - 35
OG-SDI-HDTV	36 - 37
OG-Micro-Single	38 - 39
OG-Micro-UDX	40 - 41
OG-Micro-4K	42 - 43
OG-Pinnacle	44 - 45
OG-Pinnacle-C	46 - 47
OG-Pinnacle-L	48 - 49
OG-US-3500	50 - 51
OG-US-4000	52 - 53
OG-US-5000	54 - 55
OG-DA-4HD-II	56
OG-DA-4UHD	57
OG-DA-8HD-II	58
OG-DA-8UHD	59
OG-HDM2.0-1x4	60

HDBaseT

OG-HDBT-EAPx	64
OG-HDBT-Rx	65

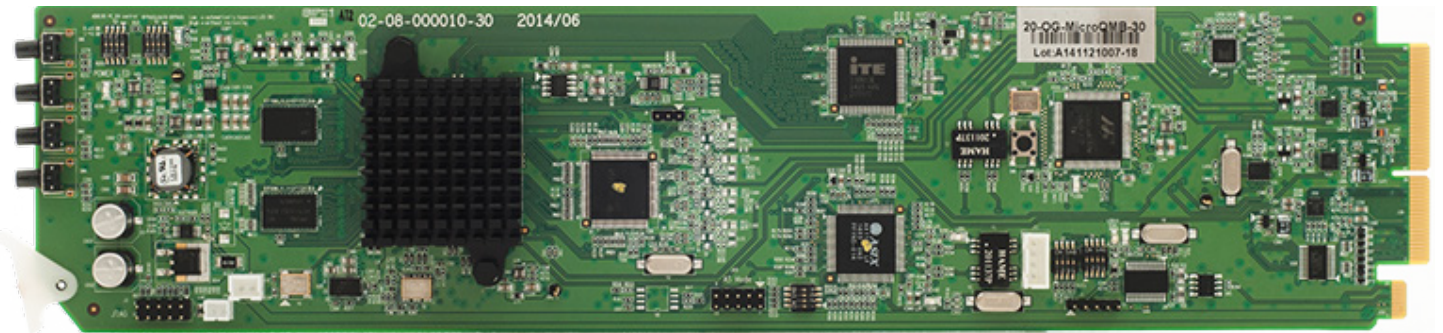
Multiviewers

- OG-MicroQ - openGear simple compact SDI video quad split 6 - 7
- OG-MiniQ - openGear modular cascadable 4 SDI input multiviewer 8 - 9
- OG-MiniDE-II - openGear modular 4 HDMI input multiviewer10 - 11
- OG-MiniDL-X+X - openGear modular cascadable hybrid multiviewer12 - 13
- OG-Mi9 - 9x1 SDI Input multiviewer with SDI Output14 - 15
- OG-Mi-9+ - 9x1 SDI Input multiviewer with SDI & HDMI Output.....16 - 17
- OG-Mi-9# - 9x2 SDI Input multiviewer with SDI & HDMI Output.....18 - 19
- OG-Mi-16# - 16x2 SDI input multiviewer with SDI & HDMI outputs.....20 - 21

openGear

OG-Micro-Q

Simple Compact SDI Video Quad Split



OG-MicroQ-MB

Key Features

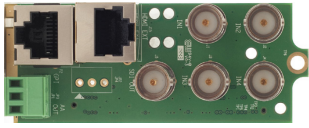
- OGX/3.0 card-based form factor
- Dashboard control enabled
- 4 auto-detect 3G/HD/SD-SDI, PAL/NTSC inputs
- Low power consumption - 12W
- Fixed Quad Split, each window can go full screen
- Single frame processing delay
- Decode up to 8 embedded audio per SDI input
- Display up to 8 audio meters per window
- Ethernet for configuration, dynamic labels & Tallies (TSL)
- Simultaneous HDMI/DVI and SDI outputs
- 2 GPI tallies per window
- 8 GPI contacts, can be configured for tally or ASCII protocol
- Borders can be turned on or off
- One 32 characters label per window
- Text and background colors have adjustable transparency
- Safe area markers
- Visual Alarm tags for audio and video presence
- Dynamic (TSL) UMD/Label
- Stereo analog audio monitoring output
- HDMI and SDI outputs have embedded stereo audio pair
- 5 year limited warranty



OPENGEAR

OG-Micro-Q

OG-MicroQ-RMx



Rear Module (2 slots)

- 4 x BNC Input
- 1 x BNC Output
- 1 x RJ45 (Extended HDMI Output)
- 1 x RJ50 for GPI/Tally
- 1 x 3-pin Connector for AA Out

Standard Accessories

- RJ50 to DB9 (for GPI)
- DB9 to Terminal Block (for GPI)
- 1 x 15 ft CAT6 cable
- 1 x RJ45 to HDMI (HDMI-SR)
- 1 x RJ45 to DVI (DVI-SR)

Optional Accessories for RMx

HDMI-1-R

Active HDMI Receiver that supports 1080p resolution up to 115 ft /35m

How to Order

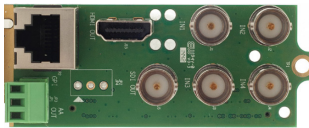
OG-MicroQ-SET-1

OG-MicroQ-MB +
OG-MicroQ-RM

OG-Micro-Q-SET-2

OG-MicroQ-MB +
OG-MicroQ-RMx

OG-MicroQ-RM



Rear Module (2 slots)

- 4 x BNC Input
- 1 x BNC Output
- 1 x HDMI Output
- 1 x RJ50 for GPI/Tally
- 1 x 3-pin Connector for AA Out

Standard Accessories

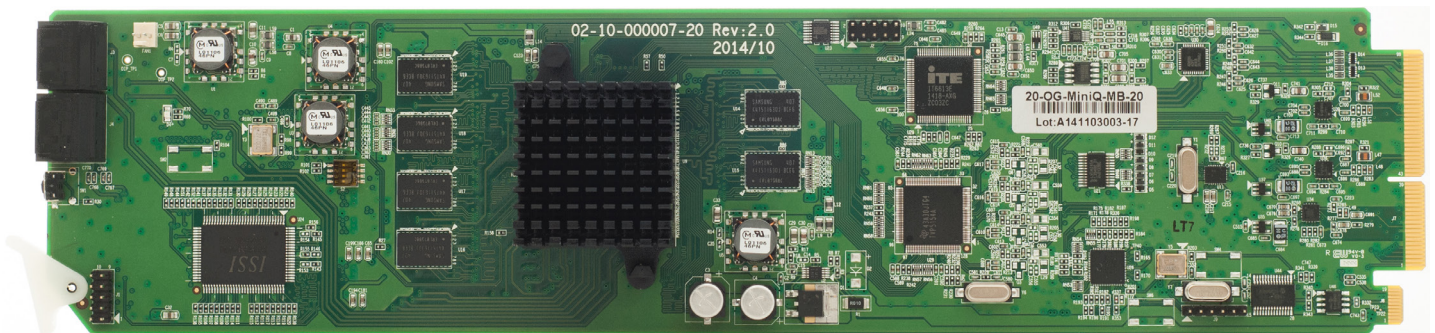
- RJ50 to DB9 (for GPI)
- DB9 to Terminal Block (for GPI)

Specifications

Total Windows	4	Output	1 x HDMI/DVI, 1 x SDI
Inputs	3G/HD/SD-SDI/Composite	HDMI (OG-MicroQ-RM)	800x480 to 1920x1200 (1080p) 50/59.94/60Hz
Serial Digital	SMPTE 424M 292M, 259M	RJ45 (OG-MicroQ-RMx)	Up to 35 feet with passive receiver Up to 115 feet with active receiver (option: HDMI-1-R)
Equalization	120m at 2.97 Gbps, 140m at 1.48 Gbps, 400m at 270 Mbps with Belden 1694A	SDI	Matching the HDMI output resolution up to 3G
Return Loss	> 15db up to 1.485 Gbps, > 10db up to 3G	On Screen Display	Borders, Labels, Tallies, Audio meters, Alarm tags, Safe area markers
Embedded Audio	SMPTE-272M-A	GPI	8 for tally or AXP (ASCII command)
Composite	NTSC (SMPTE-170M), PAL (ITU624-2)	IP	100 Base-T, TSL, AXP_Lite protocol
Signal Level	1V nominal Power 12W	DC Offset	0V, + - 0.1V
Impedance	75 ohm	Return Loss	40db up to 5MHz

openGear OG-MiniQ

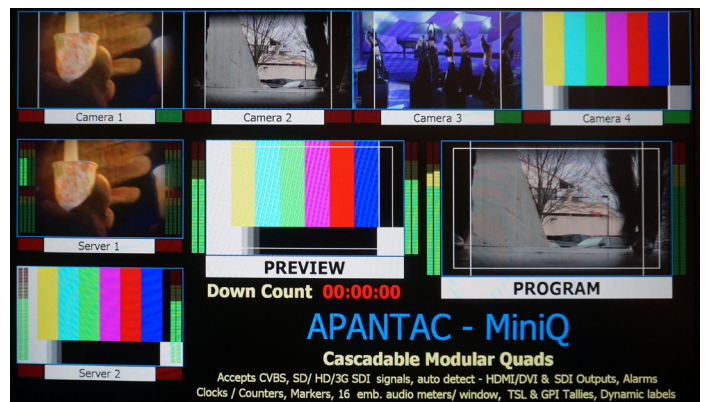
Modular Cascadable 4 SDI Input Multiviewer (up to 40 inputs)



OG-MiniQ-MB

Key Features

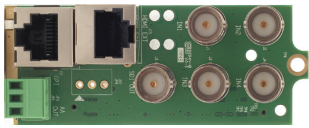
- OGX/3.0 card-based form factor
- Dashboard control enabled
- 4 auto-detect 3G/HD/SD-SDI, PAL/NTSC inputs
- Low power consumption - 15W
- Up to 10 modules can be cascaded together
- Up to 40 inputs (windows) on a single frame
- Single frame processing delay
- Decode up to 16 embedded audio per SDI input
- Ethernet for configuration, dynamic labels & Tallies (TSL)
- Simultaneous HDMI/DVI and SDI outputs
- 2 GPI tallies per window
- 8 GPI contacts, can be configured for tally or ASCII protocol
- Borders can be turned on or off
- One 32 characters label per window
- Text and background colors have adjustable transparency
- Safe area markers
- Visual Alarm tags for audio and video presence
- Dynamic (TSL) UMD/Label
- Stereo analog audio monitoring output
- HDMI and SDI outputs have embedded stereo audio pair
- 5 year limited warranty



OPENGEAR

OG-MiniQ

OG-MiniQ-RMx



Rear Module (2 slots)

- 4 x BNC Input
- 1 x BNC Output
- 1 x RJ45 (Extended HDMI Output)
- 1 x RJ45 for GPI/Tally
- 1 x 3-pin Connector for AA Out

Standard Accessories

- RJ50 to DB9 (for GPI)
- DB9 to Terminal Block (for GPI)
- 1 x 15 ft CAT6 cable
- 1 x RJ45 to HDMI (HDMI-SR)
- 1 x RJ45 to DVI (DVI-SR)

Optional Accessories for RMx

HDMI-1-R

Active HDMI Receiver that supports 1080p resolution up to 115 ft /35m

How to Order

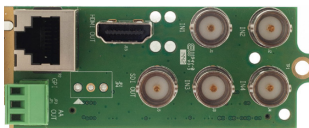
OG-MiniQ-SET-1

OG-MiniQ-MB +
OG-MiniQ-RM

OG-Mini-Q-SET-2

OG-MiniQ-MB +
OG-MiniQ-RMx

OG-MiniQ-RM



Rear Module (2 slots)

- 4 x BNC Input
- 1 x BNC Output
- 1 x HDMI Output
- 1 x RJ45 for GPI/Tally
- 1 x 3-pin Connector for AA Out

Standard Accessories

- RJ50 to DB9 (for GPI)
- DB9 to Terminal Block (for GPI)

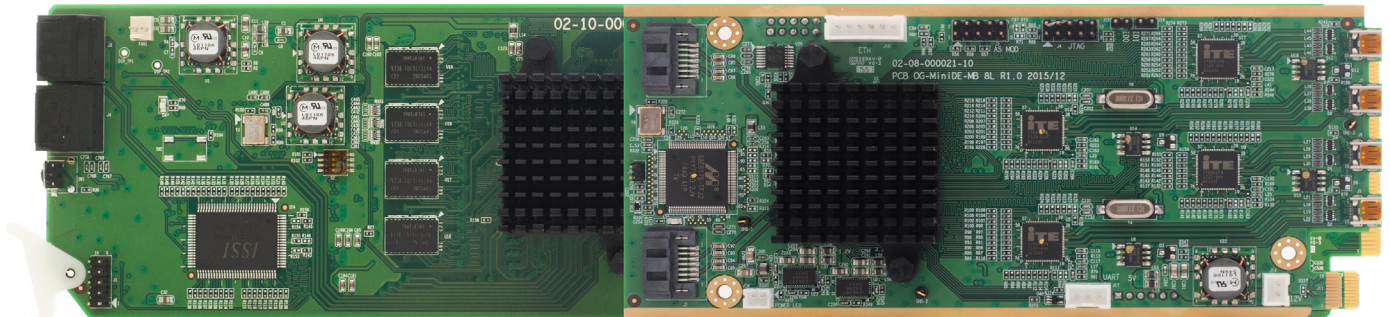
Specifications

Total Windows	4	Output	1 x HDMI/DVI, 1 x SDI
Inputs	3G/HD/SD-SDI/Composite	HDMI (OG-MiniQ-RM)	800x480 to 1920x1200 (1080p) 50/59.94/60Hz
Serial Digital	SMPTE 424M 292M, 259M	RJ45 (OG-MiniQ-RMx)	Up to 35 feet with passive receiver Up to 115 feet with active receiver (option: HDMI-1-R)
Equalization	120m at 2.97 Gbps, 140m at 1.48 Gbps, 400m at 270 Mbps with Belden 1694A	SDI	Matching the HDMI output resolution up to 3G
Return Loss	> 15db up to 1.485 Gbps, > 10db up to 3G	On Screen Display	Borders, Labels, Tallies, Audio meters, Alarm tags, Safe area markers
Embedded Audio	SMPTE-272M-A	GPI	8 for tally or AXP (ASCII command)
Composite	NTSC (SMPTE-170M), PAL (ITU624-2)	IP	100 Base-T, TSL, AXP_Lite protocol
Signal Level	1V nominal	DC Offset	0V, + - 0.1V
Impedance	75 ohm	Return Loss	40db up to 5MHz

openGear

OG-MiniDE-II

Modular Cascadable 4 HDMI Input Multiviewer (up to 40 inputs)



OG-MiniDE-II-MB

Key Features

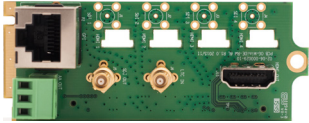
- OGX/3.0 card-based form factor
- Dashboard control enabled
- 4 HDMI inputs
- Low power consumption - 17W
- Up to 10 module can be cascaded together
- Can also be cascade together with OG-MiniQ and OG-MiniDL-II modules to create a mix and match format multiviewer
- Decodes up to 4 channels embedded audio per HDMI input
- Ethernet for configuration, dynamic labels & Tallies (TSL)
- Simultaneous HDMI/DVI and SDI outputs
- 2 GPI tallies per window
- 8 GPI contacts, can be configured for tally or ASCII protocol
- Borders can be turned on or off
- One 32 characters label per window
- Text and background colors have adjustable transparency
- Safe area markers
- Visual Alarm tags for audio and video presence
- Dynamic (TSL) UMD/Label
- Stereo analog audio monitoring output
- HDMI and SDI outputs have embedded stereo audio pair for monitoring



OPENGEAR

OG-MiniIDE-II

OG-MiniIDE-II-RM



Rear Module (2 slots)

- 4 x HDMI Inputs
- 1 x HDMI Output
- 1 x BNC Output for SDI
- 1 x BNC Input for LTC
- 1 x RJ50 for GPI/Tally
- 1 x 3-pin Connector for AA Out

Standard Accessories

- RJ50 to DB9 (for GPI)
- DB9 to Terminal Block (for GPI)
- 4 Type D HDMI male to Type A female HDMI cables

How to Order

OG-MiniIDE-II-SET-1

- OG-MiniIDE-II-MB +
- OG-MiniIDE-II--RM

Related Products

OGX-FR-CN-P

- openGear X frame with advanced network card

OG-KM-4-SET-1

- openGear based 4 input KM Switch

OG-KM-8-SET-1

- openGear based 8 input KM Switch

OG-MiniQ-SET-1

- openGear based cascadable SDI multiviewer

OG-MicroQ-SET-1

- openGear based quad split SDI multiviewer

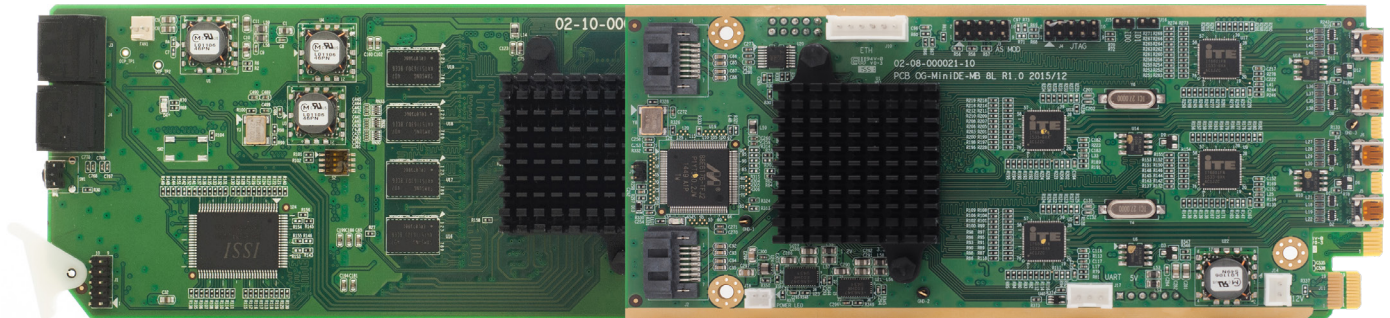
Specifications

Total Windows	4	Output	1 x HDMI/DVI, 1 x SDI with audio
Inputs	HDMI / DVI (cable not include)	HDMI	800x480 to 1920x1200 (1080p) 50/59.94/60Hz
Connector Type	HDMI Type D	Connector Type	HDMI Type A
Maximum Resolution	up to 1920x1080P@60Hz	SDI	Matching the HDMI output resolution up to 3G
Embedded Audio	Decode up to 4 channels per input	Connector Type	HD-BNC
LTC	1	Analog Audio	1
Connector Type	HD-BNC	On Screen Display	Borders, labels, tallies, audio meters, alarm tags, safe areas
GPI	8 for tally or AXP (ASCII commands)	IP	1000 base-T, TSL, AXP_Lite protocol
Connector Type	RJ-50 with terminal block	Power	17 W

openGear

OG-MiniDL-X+X

Modular Cascadable mixed and match Input Multiviewer (up to 40 inputs)



OG-MiniDL-X-X-MB

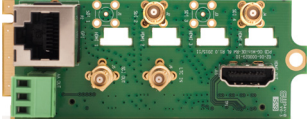
Key Features

- OGX/3.0 card-based form factor
- Dashboard control enabled
- Mixed format inputs, can any combinations of SDI and HDMI
- Low power consumption - 17W
- Up to 10 module can be cascaded together
- Can also be cascade together with OG-MiniQ and OG-MiniDE-II modules to create a mix and match format multiviewer
- Decodes up to 4 channels embedded audio per HDMI input
- Ethernet for configuration, dynamic labels & Tallies (TSL)
- Simultaneous HDMI/DVI and SDI outputs
- 2 GPI tallies per window
- 8 GPI contacts, can be configured for tally or ASCII protocol
- Borders can be turned on or off
- One 32 characters label per window
- Text and background colors have adjustable transparency
- Safe area markers
- Visual Alarm tags for audio and video presence
- Dynamic (TSL) UMD/Label
- Stereo analog audio monitoring output
- HDMI and SDI outputs have embedded stereo audio pair for monitoring
- 5 year limited warranty

OPENGear

OG-MiniDL-X+X

OG-MiniDL-2+2-RM Rear Module (2 slots)

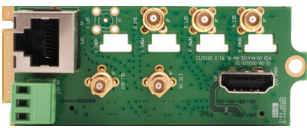


- 2 x HDMI Inputs
- 2 x SDI inputs
- 1 x HDMI Output
- 1 x BNC Output for SDI
- 1 x BNC Input for LTC
- 1 x RJ50 for GPI/Tally

Standard Accessories

- RJ50 to DB9 (for GPI)
- DB9 to Terminal Block (for GPI)
- 2 Type D HDI male to Type A female HDMI cabls

OG-MiniDL-1+3-RM Rear Module (2 slots)

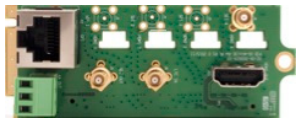


- 1 x HDMI inputs
- 3 x BNC Inputs
- 1 x BNC Output
- 1 x BNC Input for LTC
- 1 x RJ50 for GPI/Tally

Standard Accessories

- RJ50 to DB9 (for GPI)
- DB9 to Terminal Block (for GPI)
- 1 Type D HDI male to Type A female HDMI cabls

OG-MiniDL-3+1-RM Rear Module (2 slots)



- 3 x HDMI inputs
- 1 x BNC Inputs
- 1 x BNC Output
- 1 x BNC Input for LTC
- 1 x RJ50 for GPI/Tally

Standard Accessories

- RJ50 to DB9 (for GPI)
- DB9 to Terminal Block (for GPI)
- 3 Type D HDI male to Type A female HDMI cabls

How to Order

OG-MiniDL-1+3-SET-1

OG-MiniDE-II-MB +
OG-MiniDL-1+3-RM

OG-MiniDL-2+2-SET-1

OG-MiniDE-II-MB +
OG-MiniDL-2+2-RM

OG-MiniDL-3+1-SET-1

OG-MiniDE-II-MB +
OG-MiniDL-3+1-RM

Related Products

OGX-FR-CN-P

openGear X frame with
advanced network card

OG-MiniQ-SET-1

openGear based cascable
SDI multiviewer

OG-MicroQ-SET-1

openGear based quad split
SDI multiviewer

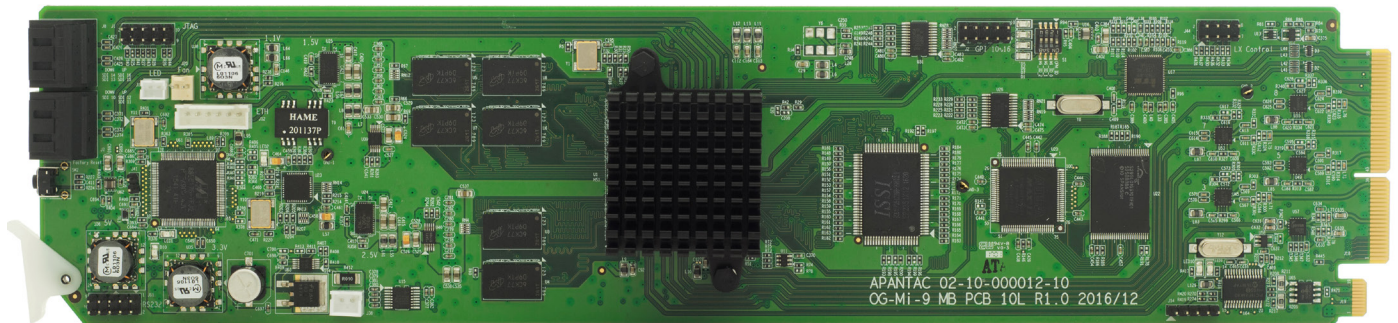
Specifications

Total Windows	4	Output	1 x HDMI/DVI, 1 x SDI with audio
Inputs	HDMI and SDI	HDMI	800x480 to 1920x1200 (1080p) 50/59.94/60Hz
Connector Type	HDMI Type D and HD-BNC	Connector Type	HDMI Type A
Maximum Resolution	up to 1920x1080P@60Hz	SDI	Matching the HDMI output resolution up to 3G
Embedded Audio	Decode up to 4 channels per input	Connector Type	HD-BNC
LTC	1	Analog Audio	1
Connector Type	HD-BNC	On Screen Display	Borders, labels, tallies, audio meters, alarm tags, safe areas
GPI	8 for tally or AXP (ASCII commands)	IP	1000 base-T, TSL, AXP_Lite protocol
Connector Type	RJ-50 with terminal block	Power	17 W

openGear

OG-Mi-9

9 x 1 SDI Input Multiviewer Card with SDI Output



OG-Mi-9-MB

Key Features

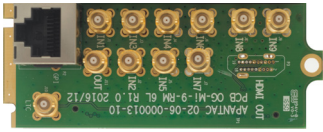
- OGX/3.0 card-based form factor
- Low latency - single frame processing delay
- 9x auto-detect 3G (Level A/B)/HD/SD-SDI inputs
- Low power consumption - 15W
- Windows can be sized and moved freely
- Decode up to 16 embedded audio per SDI input
- Ethernet for configuration, dynamic labels and Tallies (TSL)
- Standalone labels, customizable logo
- 9 GPUs for tallies, count up/down trigger or preset recall
- Built-in analog/digital clocks can sync with LTC/NTP
- Borders can be turned on or off
- Two sets of safe area makers
- Visual alarm tags for video/audio alarm
- SDI outputs with embedded stereo audio pair
- 5 year limited warranty



OPENGEAR

OG-Mi-9

OG-Mi-9-RM



Rear Module (2 slots)

- 9x HD-BNC input for SDI inputs
- 1x HD-BNC output for SDI outputs
- 1x RJ50 for GPI/Tally
- 1x HD-BNC for LTC input

Standard Accessories

- RJ50 to DB9 (for GPI)
- DB9 to Terminal Block (for GPI)

Optional Accessories

11x HDBNC-BNC-F

High density BNC to regulate BNC (female) adapter cable
1 ft/30cm

Related Products

OGX-FR-CN-P

openGear X frame with advanced network card

OG-Mi-9+-SET-1

openGear based 9 input SDI multiviewer with HDMI, SDI outputs

OG-Mi-9#-SET-1

openGear based 9 input SDI multiviewer with dual outputs

OG-Mi-16-SET-1

openGear based 16 input SDI multiviewer

OG-MiniQ-SET-1

openGear based cascadable SDI multiviewer

How to Order

OG-Mi-9-SET-1:

OG-Mi-9-MB + OG-Mi-9-RM

OG-Mi-9-SET-2:

OG-Mi-9-MB + OG-Mi-9-RM + 11 HD-BNC to BNC cable

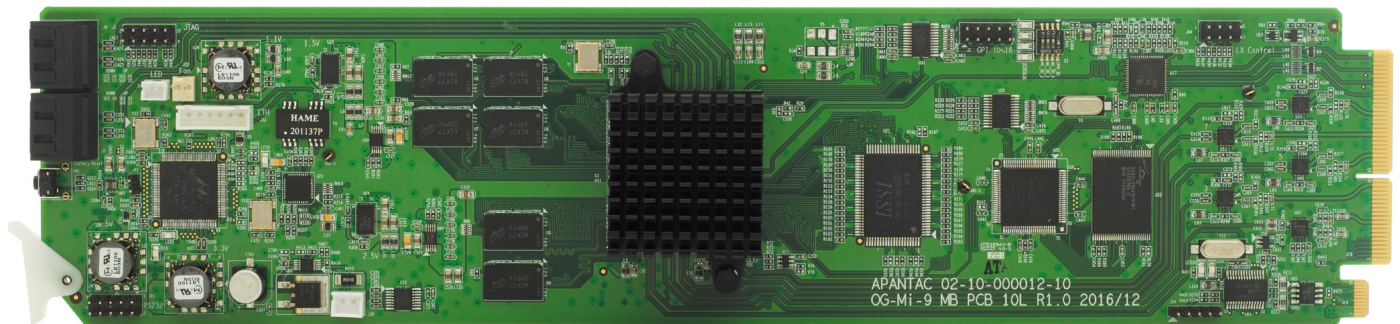
Specifications

Inputs	9x 3G (level A/B)/HD/SD-SDI	Video Output	1x SDI
Connector Type	HD-BNC	Audio Output	Embedded HDMI and SDI
Total Windows	9	Output Resolution	1920x1080P 50/60Hz
Serial Digital	3G/HD/SD-SDI in 50/59.94/60Hz	On Screen Display	Borders, Labels, Tallies, Audio meters, Alarm tags, Safe area markers
Equalization	120m at 2.97 Gbps, 140m at 1.48 Gbps, 400m at 270 Mbps with Belden 1694A	GPI	9 for tally or AXP (ASCII command)
Return Loss	> 15db up to 1.485 Gbps > 10db up to 3G	Serial Port	N/A
Embedded Audio	SMPTE-272M-A	IP	100 Base-T, TSL, AXP_Lite protocol
Alarms	No audio, audio high/low, no video, video format display	Electrical	15 W

openGear

OG-Mi-9+

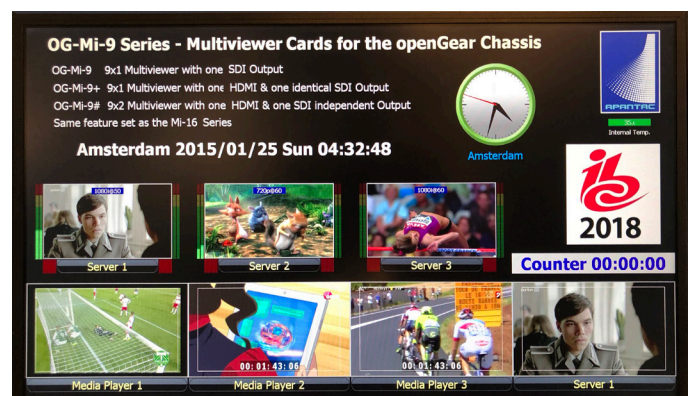
9 x 1 SDI Multiviewer Card with HDMI and SDI Output



OG-Mi-9+-MB

Key Features

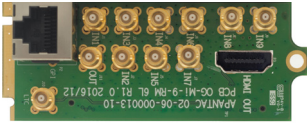
- OGX/3.0 card-based form factor
- Low latency - single frame processing delay
- 9 auto-detect 3G(Level A/B)/HD/SD-SDI inputs
- Low power consumption - 15W
- Windows can be sized and moved freely
- Decode up to 16 embedded audio per SDI input
- Ethernet for configuration, dynamic labels & Tallies (TSL)
- Standalone labels, customizable logo
- 9 GPIs for tallies, count up/down trigger or preset recall
- Built-in analog/digital clocks can sync with LTC/NTP
- Border can be turned on or off
- Two sets of safe area makers
- Visual alarm tags for video/audio alarm
- HDMI and SDI outputs have embedded stereo audio pair
- 5 year limited warranty



OPENGEAR

OG-Mi-9+

OG-Mi-9+-RM



Rear Module (2 slots)

- 9x HD-BNC Input for SDI Inputs
- 1x HD-BNC Output for SDI Outputs
- 1x HDMI Output
- 1x RJ50 for GPI/Tally
- 1x HD-BNC for LTC input

Standard Accessories

- RJ50 to DB9 (for GPI)
- DB9 to Terminal Block (for GPI)

Optional Accessories

11x HD-BNC-BNC-F

High density BNC to regulate BNC (female) adapter cable
1 ft/30cm

Related Products

OGX-FR-CN-P

openGear X frame with advanced network card

OG-Mi-9-SET-1

openGear based 9 input SDI multiviewer with HDMI, SDI outputs

OG-Mi-9#-SET-1

openGear based 9 input SDI multiviewer with dual outputs

OG-Mi-16-SET-1

openGear based 16 input SDI multiviewer

OG-MiniQ-SET-1

openGear based cascadable SDI multiviewer

How to Order

OG-Mi-9+-SET-1:

OG-Mi-9+-MB + OG-Mi-9+-RM

OG-Mi-9+-SET-2:

OG-Mi-9+-MB + OG-Mi-9+-RM + 11 HD-BNC to BNC cable

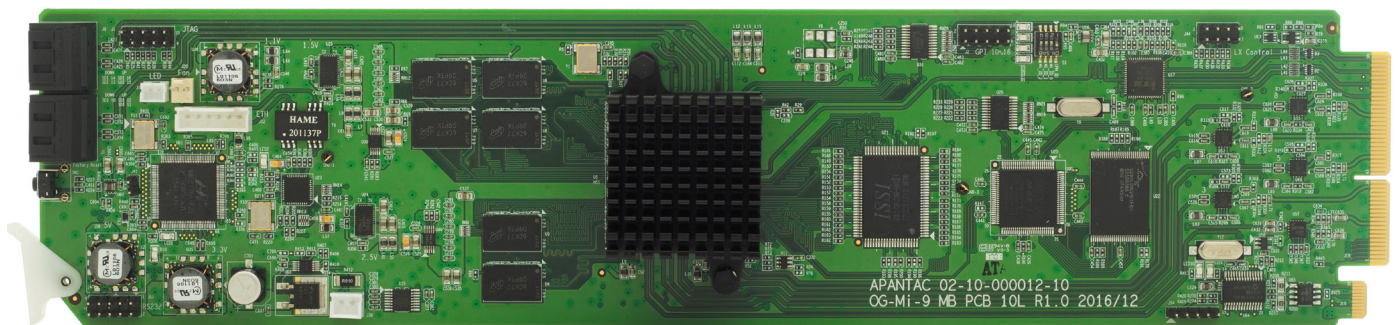
Specifications

Inputs	9x 3G (level A/B)/HD/SD-SDI	Video Outputs	1 x HDMI/DVI 1 x SDI
Connector Type	HDBNC	Audio Output	Embedded HDMI and SDI
Total Windows	9	Output Resolution	1920x1080P 50/60Hz
Serial Digital	3G/HD/SD-SDI in 50/59.94/60Hz	On Screen Display	Borders, Labels, Tallies, Audio meters, Alarm tags, Safe area markers
Equalization	120m at 2.97 Gbps, 140m at 1.48 Gbps, 400m at 270 Mbps with Belden 1694A	GPI	9 for tally or AXP (ASCII command)
Return Loss	> 15db up to 1.485 Gbps > 10db up to 3G	Serial Port	N/A
Embedded Audio	SMPTE-272M-A	IP	100 Base-T, TSL, AXP_Lite protocol
Alarms	No audio, audio high/low, no video, video format display	Electrial	15 W

openGear

OG-Mi-9#

9 x 2 SDI Multiviewer Card with HDMI and SDI Output (dual Outputs)



OG-Mi-9#-MB

Key Features

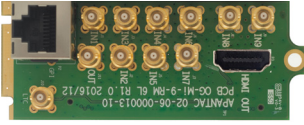
- OGX/3.0 card-based form factor
- Low latency - single frame processing delay
- 9 auto-detect 3G(Level A/B)/HD/SD-SDI inputs
- Low power consumption - 15W
- Windows can be sized and moved freely
- Decode up to 16 embedded audio per SDI input
- Ethernet for configuration, dynamic labels & Tallies (TSL)
- Standalone labels, customizable logo
- 9 GPUs for tallies, count up/down trigger or preset recall
- Built-in analog/digital clocks can synn with LTC/NTP
- Border can be turned on or off
- Two sets of safe area makers
- Visual alarm tags for video/audio alarm
- HDMI and SDI outputs have embedded stereo audio pair
- 5 year limited warranty



OPENGEAR

OG-Mi-9#

OG-Mi-9#-RM



Rear Module (2 slots)

- 9x HDBNC Input for SDI Inputs
- 1x HDBNC Output for SDI Outputs
- 1x HDMI Output
- 1x RJ50 for GPI/Tally
- 1x HDBNC for LTC input

Standard Accessories

- RJ50 to DB9 (for GPI)
- DB9 to Terminal Block (for GPI)

Optional Accessories

11x HD-BNC-BNC-F

High density BNC to regulate BNC (female) adapter cable
1 ft/30cm

Related Products

OGX-FR-CN-P

openGear X frame with advanced network card

OG-Mi-9-SET-1

openGear based 9 input SDI multiviewer with SDI, HDMI outputs

OG-Mi-9+-SET-1

openGear based 9 input SDI multiviewer with SDI, HDMI outputs

OG-Mi-16-SET-1

openGear based 16 input SDI multiviewer

OG-MiniQ-SET-1

openGear based cascadable SDI multiviewer

How to Order

OG-Mi-9#-SET-1:

OG-Mi-9#-MB + OG-Mi-9#-RM

OG-Mi-9#-SET-2:

OG-Mi-9#-MB + OG-Mi-9#-RM + 11 HD-BNC to BNC cable

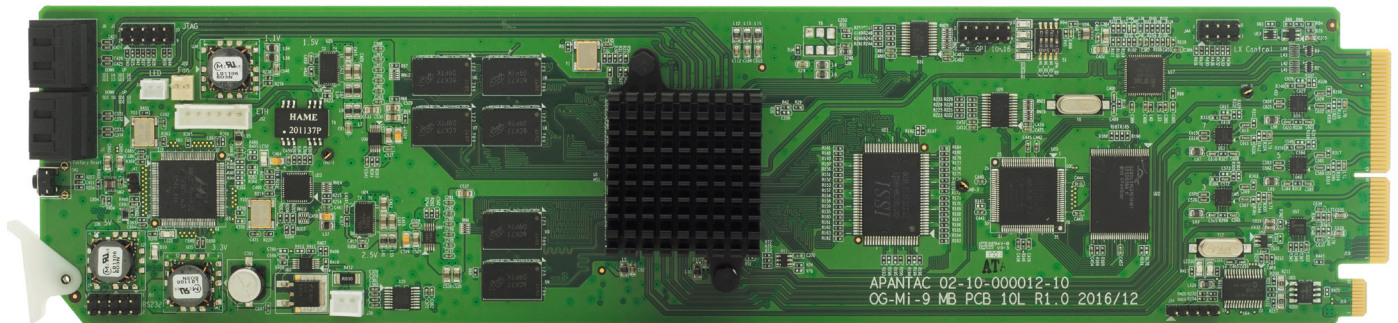
Specifications

Inputs	9x 3G (level A/B)/HD/SD-SDI	Video Outputs	1 x HDMI/DVI 1 x SDI
Connector Type	HDBNC	Audio Output	Embedded HDMI and SDI
Total Windows	9	Output Resolution	1920x1080P 50/60Hz
Serial Digital	3G/HD/SD-SDI in 50/59.94/60Hz	On Screen Display	Borders, Labels, Tallies, Audio meters, Alarm tags, Safe area markers
Equalization	120m at 2.97 Gbps, 140m at 1.48 Gbps, 400m at 270 Mbps with Belden 1694A	GPI	9 for tally or AXP (ASCII command)
Return Loss	> 15db up to 1.485 Gbps > 10db up to 3G	Serial Port	N/A
Embedded Audio	SMPTE-272M-A	IP	100 Base-T, TSL, AXP_Lite protocol
Alarms	No audio, audio high/low, no video, video format display	Electrical	15 W

openGear

OG-Mi-16#

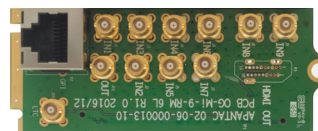
16 x 2 SDI Multiviewer Card with HDMI and SDI Output (dual outputs)



OG-Mi-9+ MB

Key Features

- OGX/3.0 card-based form factor
- Low latency - single frame processing delay
- 16 x auto-detect 3G (Level A/B)/HD/SD-SDI inputs
- 2 independent outputs: 1 x HDMI and 1 x SDI
- Low power consumption - 20W
- Windows can be sized and moved freely
- Decode up to 16 embedded audio per SDI input
- Ethernet for configuration, dynamic labels and Tallies (TSL)
- Standalone labels, customizable logo
- 16 GPIs for tallies, count up/down trigger or preset recall
- Built-in analog/digital clocks can sync with LTC/NTP
- Borders can be turned on or off
- Two sets of safe area makers
- Visual alarm tags for video/audio alarm
- HDMI and SDI outputs with embedded stereo audio pair
- 5 year limited warranty

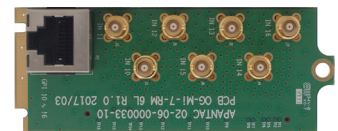


OG-Mi-9-MB (2 slots)

- 9 x HD-BNC input for SDI inputs
- 1 x HD-BNC output for SDI outputs
- 1 x RJ50 for GPI/Tally
- 1 x HDMI output
- 1 x HD-BNC for LTC input

Standard Accessories

- RJ50 to DB9 (for GPI)
- DB9 to Terminal Block (for GPI)



OG-Mi-7-RM (2 slots)

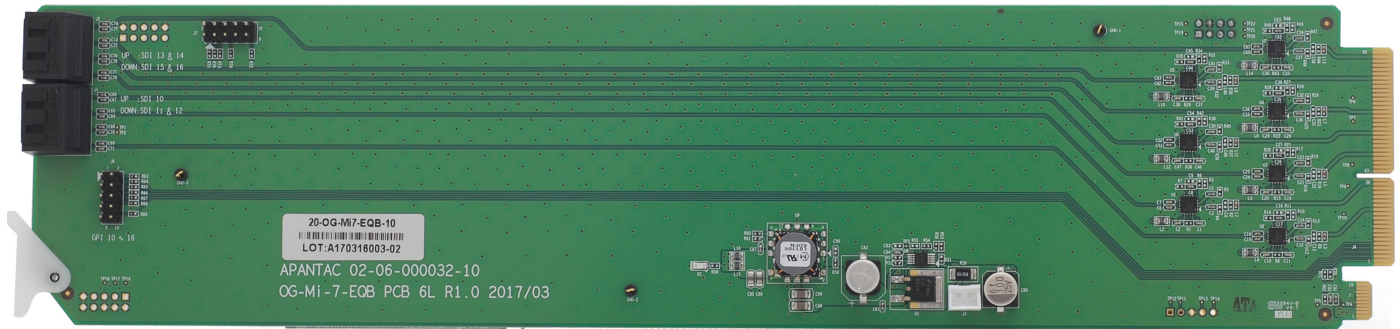
- 7 x HD-BNC input for SDI inputs
- 1 x RJ50 for GPI/Tally

Optional Accessories

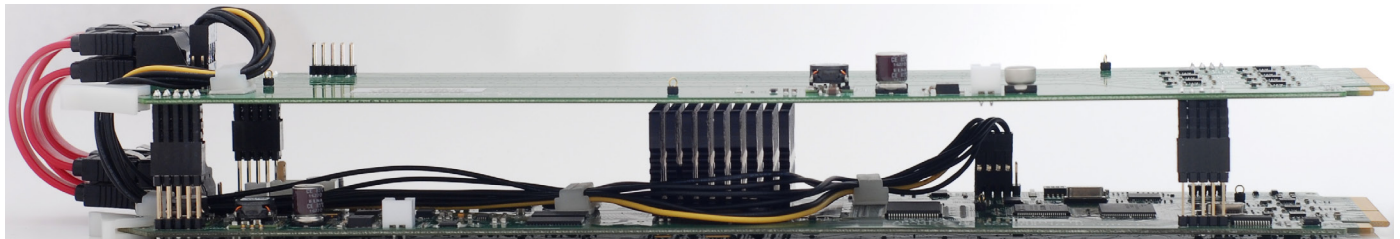
- RJ50 to DB9 (for GPI)
- 18 x HD-BNC to BNC cable

OPENGEAR

OG-Mi-16#



OG-Mi-7-MB



OG-Mi-16#-MB

How to Order

OG-Mi-16#-SET-1:

OG-Mi-9+-MB + OG-Mi-9-RM + OG-Mi-7-MB + OG-Mi-7-RM

OG-Mi-16#-SET-2:

OG-Mi-9+-MB + OG-Mi-9-RM + OG-Mi-7-MB + OG-Mi-7-RM + 11 HD-BNC to BNC cable

Specifications

Inputs	16x 3G (level A/B)/HD/SD-SDI	Video Outputs	1x SDI and 1 x HDMI
Connector Type	HD-BNC	Audio Output	Embedded HDMI and SDI
Total Windows	16	Output Resolution	1920x1080P 50/60Hz
Serial Digital	3G/HD/SD-SDI in 50/59.94/60Hz	On Screen Display	Borders, Labels, Tallies, Audio meters, Alarm tags, Safe area markers
Equalization	120m at 2.97 Gbps, 140m at 1.48 Gbps, 400m at 270 Mbps with Belden 1694A	GPI	16 inputs with RJ50 - DB9 connector
Return Loss	> 15db up to 1.485 Gbps > 10db up to 3G	Serial Port	N/A
Embedded Audio	SMPTE-272M-A	IP	100 Base-T, TSL, AXP_Lite protocol
Alarms	No audio, audio high/low, no video, video format display	Electrical	20 W

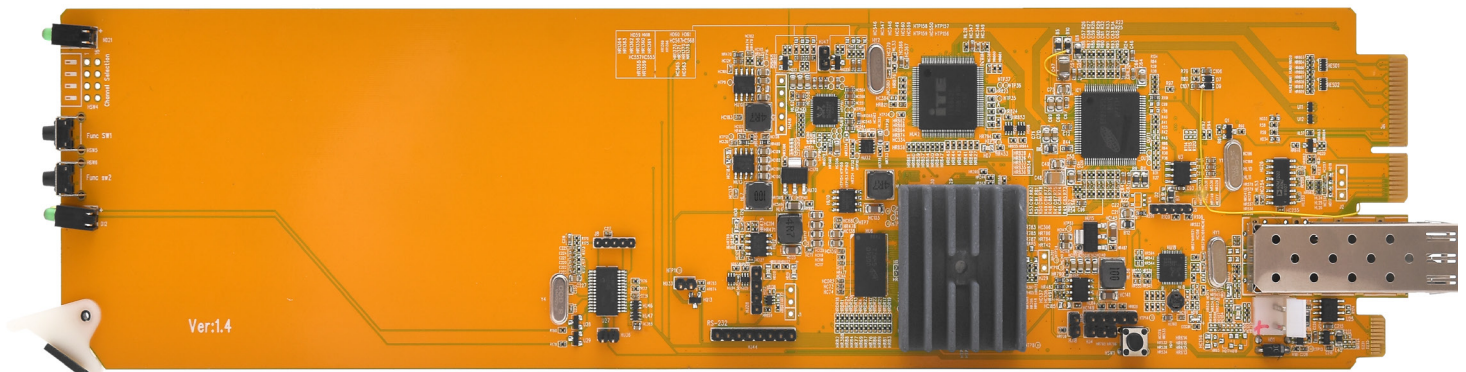
KVM Products

- OG-KVM-IP-Tx - KVM over IP transmitter24 - 25
- OG-KM - KM switch26 - 27

openGear

OG-KVM-IP-Tx

KVM Extenders with either copper or fiber output based on 1 Gig Ethernet

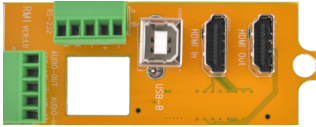


OG-KVM-IP-Tx-MB

Key Features

- openGear 3.0/X card-based form factor
- Dashboard control enabled
- 10 cards can fit into an openGear OG-X frame
- Based on Gigabit Ethernet Technology (IGMP and Jumbo frame), outputs both copper or fiber
- Requires KVM-IP-Rx, KVM-IP-Rx-P, KVM-IP-Rx-F to complete the system
- Multi-mode Fiber - support up to 550m (OM2/OM3)
- Single-mode Fiber - Supports up to 10 km
- Copper - Supports up to 170 meters point to point extension with CAT6 cable
- Copper - Supports up to 100 meters when used with a GigE switch
- Supports point-to-point (unicast), point-to-multi-point (multicast) for audio/video distribution
- Perform similarly to an expandable KVM switch when bundled with a GigE switch
- Supports bi-directional stereo audio; embedded HDMI and external stereo input
- Supports RS-232 communication between Tx and Rx
- Built-in webpage for configuration
- Connection manager software for Tx/Rx management
- Supports resolutions up to 3840x2160@30Hz
- Advanced EDID management functionality. Built-in EDID, EDID pass through, copy EDID and sharing EDID
- Built-in scaler on the receiver
- Low power consumption - less than 10W

OG-KVM-IP-Tx-RM



Rear Module (2 slots)

- 1 x HDMI input
- 1 x HDMI output
- 1 x USB to connect to computer
- 1 x 4 pin for IR and RS232
- 1 x 4 pin for Audio in and out
- 1 x space for SFP (fiber or copper)

How to Order

OG-KVM-IP-Tx-SET-1

OG-KVM-IP-Tx-MB +
OG-KVM-IP-Tx-RM

OG-KVM-IP-Tx-SET-2

1 x OG-KVM-IP-Tx-MB +
1 x OG-KVM-IP-Tx-RM +
1 x SFP-1G-RJ45

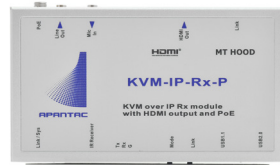
OG-KVM-IP-Tx-SET-3

1 x OG-KVM-IP-Tx-MB +
1 x OG-KVM-IP-Tx-RM +
1 x SFP-1G-Fiber

KVM over IP Receivers - Required to complete the system



KVM-IP-Rx-F



KVM-IP-Rx-P



KVM-IP-Rx

Related Products

KVM-IP-Rx-F

KVM over IP receiver with
fiber input

KVM-IP-Rx-P

KVM over IP receiver with
POE

KVM-IP-Rx

KVM over IP receiver that
supports HDMI, DVI and VGA
output

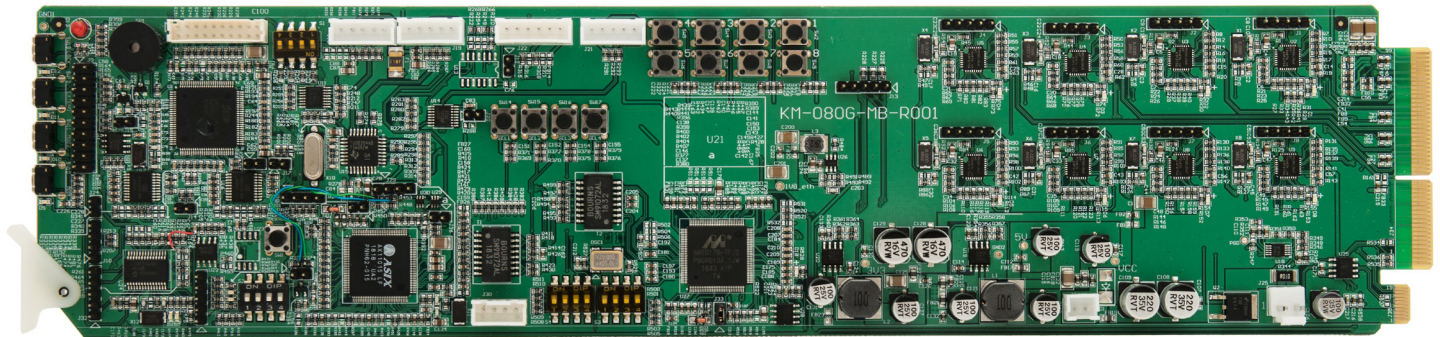
Specifications

Models		OG-KVM-IP-Tx
Video	Input	HDMI
	Output	HDMI Loop out + SFP (Fiber or copper)
Audio	Input	2 of the 4 pin phoenix connector
	Output	2 of the 4 pin phoenix connector
USB	Tx Side	USB Type B (Female)
System Link	Output	SFP (Fiber or copper)
RS-232 Baud Rate		2 of the 4-pin Phoenix connector up to 115,200 bps, full duplex
Video Resolution		Up to 3840x2160@30Hz
Interconnect Cable		Standard CAT6/CAT6a/CAT7 network cable, single mode fiber or multi-mode fiber (OM2/OM3)
Maximum Copper Cable Length		170m point-to-point, 100m when connected to a switch
Maximum Fiber Cable Length		10 km on Single mode, 550m on multi-mode cables

openGear

OG-KM

KM Switch for openGear Architecture



OG-KM-4 / OG-KM-8

Key Features

- OGX/3.0 card-based form factor
- Dashboard control enabled
- Switches seamlessly amongst up to 8 computers
- 4 to 8 independent desktops can be combined into one virtual extended desktop
- Supports extended desktop mode
- Transparent USB emulation for universal compatibility
- Hot pluggable; will resume operation within 5 seconds
- 5 year limited warranty

Turns into a Multiviewer with KVM Functionality

Combine with an Apantac openGear Multiviewer including:

OG-MiniDE-II-SET-1

openGear based cascadable HDMI multiviewer

OG-Mini-X+X

openGear based cascadable hybrid multiviewer (HDMI + SDI)

OG-MiniQ-SET-1

openGear based cascadable SDI multiviewer

OG-MicroQ-SET-1

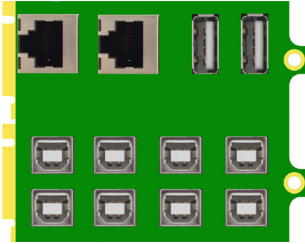
openGear based quad-split SDI multiviewer

OPENGEAR

OG-KM

OG-KM-8-RM

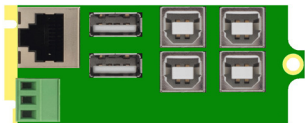
Rear Module (4 slots)



- 8x USB Type B Inputs (connect to 8 computers)
- 2x USB Type A Outputs (keyboard and mouse)
- 1x RJ45 input (RS232 In)
- 1x RJ45 Output (RS232 Out)

OG-KM-4-RM

Rear Module (2 slots)



- 4x USB Type B Inputs (connect up to 4 computers)
- 2x USB Type A Outputs (keyboard and mouse)
- 1x RJ45 Input (RS232 In)
- 1x 3 Pin Output (RS232 Out)

How to Order

OG-KM-4-SET-1

OG-KM-4-MB + OG-KM-4-RM

OG-KM-8-SET-1

OG-KM-8-MB + OG-KM-8-RM

Related Products

OGX-FR-CN-P

openGear X frame with advanced network card

OG-MiniDE-II-SET-1

openGear based cascadable HDMI multiviewer

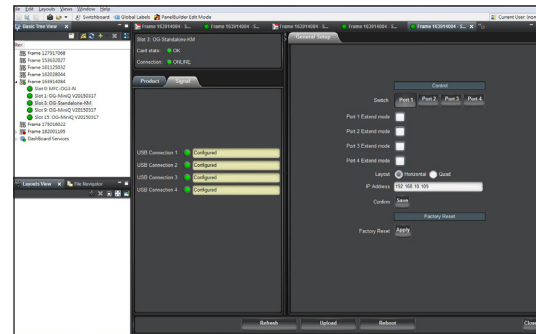
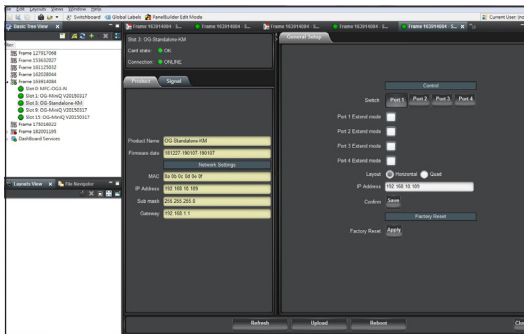
OG-MiniQ-SET-1

openGear based cascadable SDI multiviewer

OG-MicroQ-SET-1

openGear based quad-split SDI multiviewer

Dashboard Interface



Specifications

Model	OG-KM-4	OG-KM-8
Inputs	4x USB Type B (connect up to 4 computers) 1x RJ45 (FW upgrade and expansion)	8x USB Type B (connect up to 8 computers) 1x RJ45 (FW upgrade and expansion)
Outputs	2x USB Type A (keyboard / mouse) 1x3 3-pin Phoenix connector (expansion)	2x USB Type A (keyboard / mouse) 1x RJ45 (expansion)

DA / Splitters, Converters, Scalers

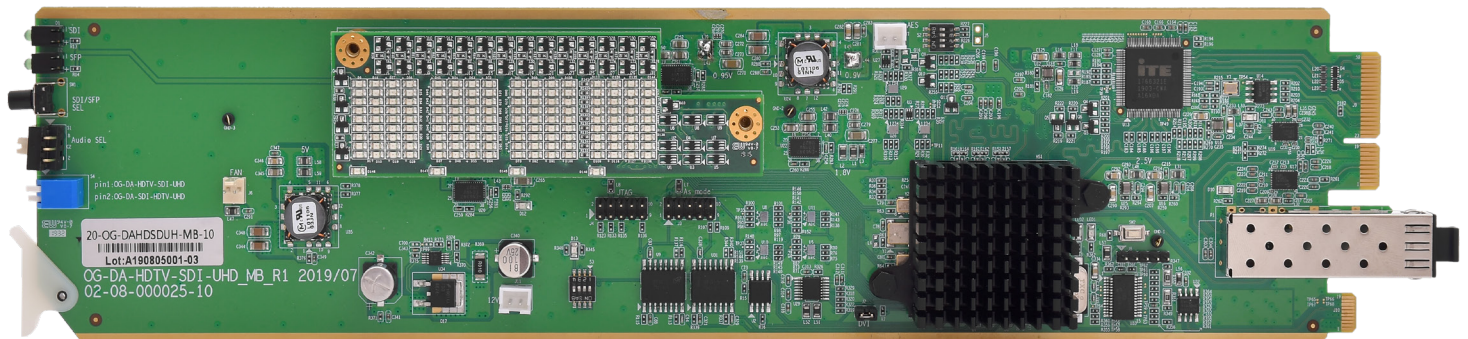
- OG-HDTV-SDI-UHD30 - 31
- OG-SDI-HDTV-UHD32 - 33
- OG-HDTV-SDI-II34 - 35
- OG-DA-SDI-HDTV36 - 37
-
- OG-Micro-Single38 - 39
- OG-Micro-UDX40 - 41
- OG-Micro-4K42 - 43
- OG-Pinnacle44 - 45
- OG-Pinnacle-C46 - 47
- OG-Pinnacle-L48 - 49
- OG-US-350050 - 51
- OG-US-400052 - 53
- OG-US-500054 - 55

- OG-DA-4HD-II 56
- OG-DA-4UHD 57
- OG-DA-8HD-II 58
- OG-DA-8UHD 59
- OG-HDM2.0-1x4 60

openGear

OG-DA-HDTV-SDI-UHD

HDMI 2.0 to SDI Converter with Looping input and Fiber output



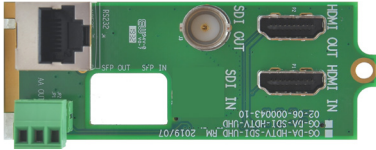
OG-DA-HDTV-SDI-II-MB

Key Features

- OGX/3.0 card-based form factor
- Dashboard control enabled
- Supports HDMI 2.0 video input and loop out
- Supports up to UHD@60Hz (4:4:4)
- Outputs up to 12G SDI
- Optional 12G SDI fiber output via SFP
- Status LEDs
- Stereo AES and AA audio monitoring outputs
- Low power consumption - less than 12W
- 5 year limited warranty

OG-DA-HDTV-SDI-UHD-RM

Rear Module (2 slots)



- 1x HDMI input
- 1x HDMI loop out
- 1x SDI output
- 1x optional SFP Fiber output

How to Order

OG-DA-HDTV-SDI-UHD-SET-1
OG-DA-HDTV-SDI-UHD-MB +
OG-DA-HDTV-SDI-UHD-RM

OG-DA-HDTV-SDI-UHD-SET-2
OG-DA-HDTV-SDI-UHD-MB +
OG-DA-HDTV-SDI-UHD-RM +
SFP-SDI-12G-Tx

Related Products

OGX-FR-CN-P
openGear X frame with
advanced network card

OG-DA-SDI-HDTV-UHD
openGear based 12G SDI to
HDMI 2.0 converter

OG-HDTV-SDI-II-SET-1
openGear based HDMI to SDI
converter without scaler

OG-SDI-HDTV-SET-1
openGear based SDI to HDMI
converter without scaler

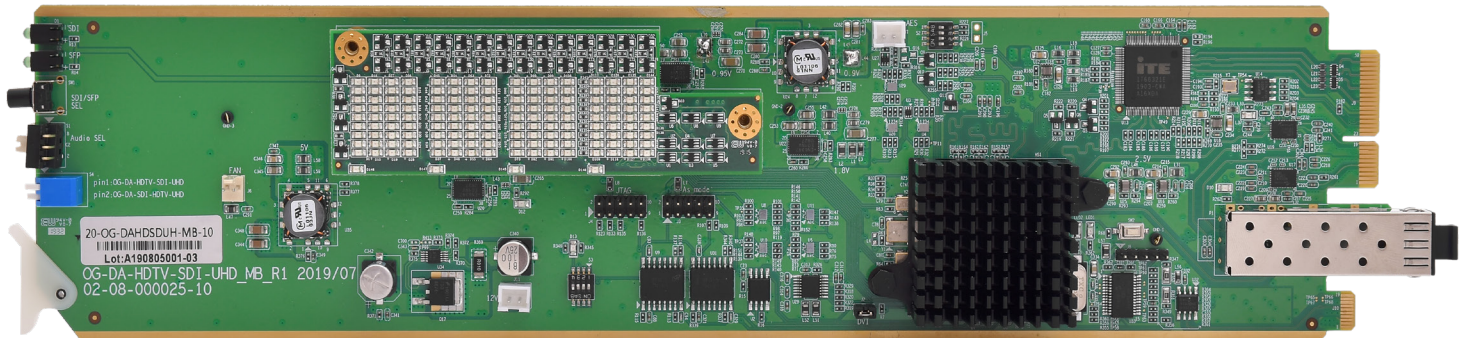
Specifications

Model	DA-HDTV-SDI-UHD		
HDMI Inputs	1 x HDMI up to UHD	Analog audio Output	Selectable stereo pair
HDMI Outputs	1 x HDMI up to UHD	AES audio Output	Selectable stereo pair
SDI Output	Up to 12G SDI	Switch	Between fiber and BNC
Optional Fiber Output	1 x SFP	Control	Dashboard

openGear

OG-DA-SDI-HDTV-UHD

12G SDI to HDMI 2.0 Converter without Scaler



OG-DA-SDI-HDTV-UHD

Key Features

- OGX/3.0 card-based form factor
- Dashboard control enabled
- Supports 12G SDI video input and loop out
- Output up to HDMI 2.0 UHD@60Hz (4:4:4)
- Optional 12G SDI fiber input via SFP
- Stereo AA audio monitoring outputs
- Low power consumption - less than 12W
- 5 year limited warranty

OPENGEAR

OG-DA-SDI-HDTV-UHD

OG-DA-SDI-HDTV-UHD-RM

Rear Module (2 slots)



- 1x SDI input
- 1 x SDI loopout
- 1x HDMI output
- Optional Fiber

How to Order

OG-DA-SDI-HDTV-UHD-SET-1

OG-DA-SDI-HDTV-UHD-MB +
OG-DA-SDI-HDTV-UHD-RM

OG-DA-SDI-HDTV-SET-2

OG-DA-SDI-HDTV-UHD-MB +
OG-DA-SDI-HDTV-UHD-RM +
SFP-SDI-12G-Rx

Related Products

OGX-FR-CN-P

openGear X frame with
advanced network card

OG-DA-HDTV-SDI-UHD

openGear based HDMI 2.0 to
12G SDI converter

OG-DA-HDTV-SDI-II

openGear HDMI to SDI
converter

OG-SDI-HDTV-SET-1

openGear based SDI to HDMI
converter without scaler

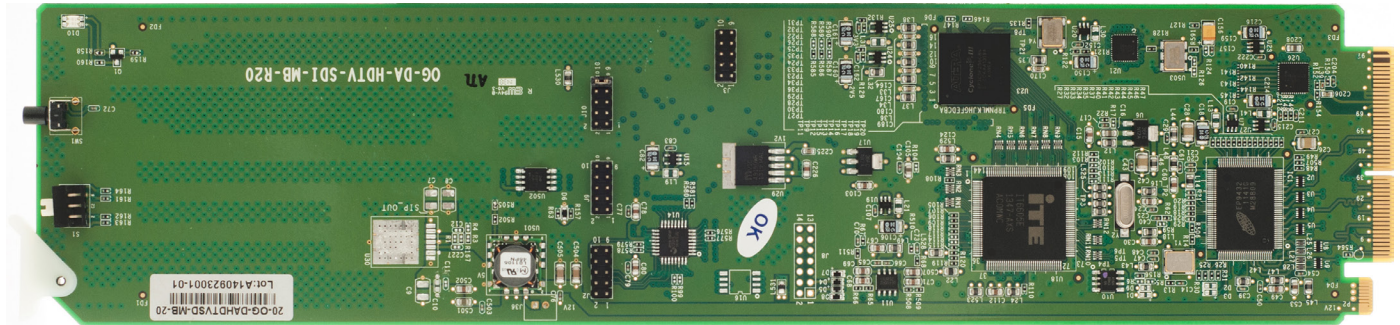
Specifications

Model	OG-SDI-HDTV-UHD		
SDI Inputs	12G-SDI	Analog audio Output	Selectable stereo pair
SDI Outputs	12G-SDI	Switch	Between fiber and BNC
HDMI Output	HDMI 2.0 up to UHD	Control	Dashboard
Optional Fiber input	1 x SFP		

openGear

OG-DA-HDTV-SDI-II

HDMI to SDI Converter without Scaler



OG-DA-HDTV-SDI-II-MB

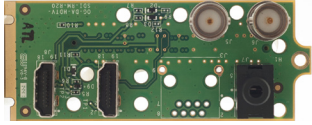
Key Features

- OGX/3.0 card-based form factor
- Dashboard control enabled
- HDMI input
- Unbalanced analog audio input
- HDMI loop out on OG-DA-HDTV-SDI-RM
- Cable reach up to 120 meters for 3G, 140 meters for HD-SD-SDI
- Built-in multi-format color bar generator
- Built-in interlacer - change 1080P to 1080i output
- Low power consumption
- 5 year limited warranty

OPENGEAR

OG-DA-HDTV-SDI-II

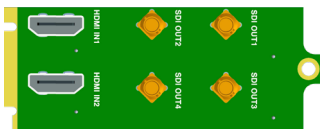
OG-DA-HDTV-SDI-RM



Rear Module (2 slots)

- 1x HDMI input
- 1x HDMI loop out
- 2x SDI output

OG-DA-HDTV-SDI-RM2



Rear Module (2 slots)

- Side A
 - 1x HDMI input
 - 2x SDI output
- Side B
 - 1x HDMI input
 - 2x SDI output

How to Order

OG-DA-HDTV-SDI-II-SET-1
OG-DA-HDTV-SDI-II-MB +
OG-DA-HDTV-SDI-RM

OG-DA-HDTV-SDI-II-SET-2
2 x OG-DA-HDTV-SDI-II-RM +
1 x OG-DA-HDTV-SDI-RM2

Related Products

OGX-FR-CN-P
openGear X frame with
advanced network card

OG-US-3000-SET-1
openGear based Universal
Scaler without genlock

OG-US-3500-SET-1
openGear based Universal
Scaler with genlock

OG-SDI-HDTV-SET-1
openGear based SDI to HDMI
converter without scaler

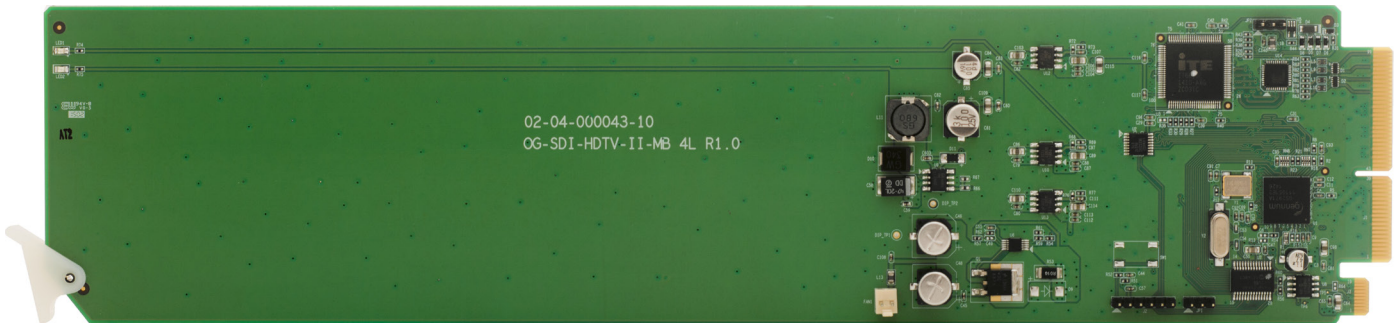
Specifications

Input	HDMI	Output	2x reclocked SDI
Control	Dashboard	Analog Audio Out	35 mm phone jack (RM only, not RM2)
Loop out	HDMI (RM only, not RM2)		

openGear

OG-SDI-HDTV

SDI to HDMI Converter without Scaler



OG-SDI-HDTV-MB

Key Features

- OGX/3.0 card-based form factor
- Dashboard control enabled
- Auto-detect 3G SDI (1080P - SMPTE-425M, Level A) HD-SDI (720P, 1080i) or SD-SDI (525, 625)
- HDMI output
- Low power consumption
- 5 year limited warranty

OPENGEAR

OG-SDI-HDTV

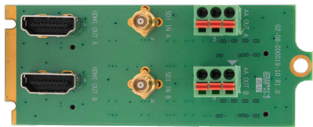
OG-SDI-HDTV-RM



Rear Module (2 slots)

- 1x SDI input
- 1x HDMI output
- 1 x analog audio output (3 pin: L/G/R)

OG-SDI-HDTV-RM2



Rear Module (2 slots)

- Side A
- 1x SDI input
 - 1x HDMI output
 - 1 x analog audio output (3 pin: L/G/R)

- Side B
- 1x SDI input
 - 1x HDMI output
 - 1 x analog audio output (3 pin: L/G/R)

How to Order

OG-SDI-HDTV-SET-1

OG-SDI-HDTV-MB +
OG-SDI-HDTV-RM

OG-SDI-HDTV-SET-2

2 x OG-SDI-HDTV-MB +
1 x OG-SDI-HDTV-RM2

Related Products

OGX-FR-CN-P

openGear X frame with
advanced network card

OG-US-3000-SET-1

openGear based Universal
Scaler without genlock

OG-US-3500-SET-1

openGear based Universal
Scaler with genlock

OG-HDTV-SDI-II-SET-1

openGear based HDMI to SDI
converter without scaler

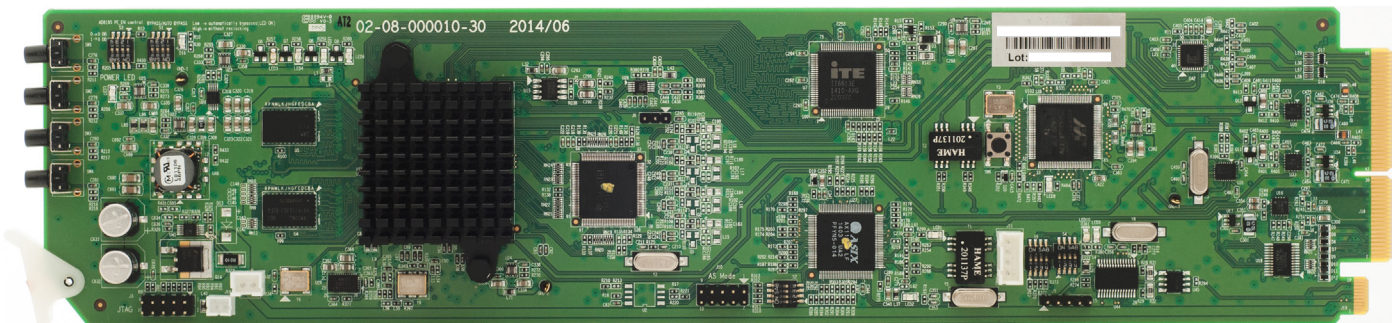
Specifications

Input	HDMI	Output	2x reclocked SDI
Control	Dashboard	Analog Audio Out	35 mm phone jack (RM only, not RM2)
Loop out	HDMI (RM only, not RM2)		

openGear

OG-Micro-Single

SDI to HDMI converter/Scaler with advanced on screen display (OSD)



OG-Micro-Single-MB

Key Features

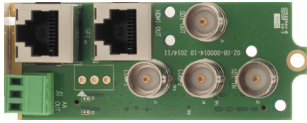
- OGX/3.0 card-based form factor
- Dashboard control enabled
- Auto-detect 3G/HD/SD-SDI, PAL/NTSC inputs
- Low power consumption - 12W
- Single frame processing delay
- Decode up to 8 embedded audio per SDI input
- Display up to 8 audio meters per window
- Ethernet for configuration, dynamic labels & Tallies (TSL)
- Simultaneous HDMI/DVI and SDI outputs
- 2 GPI tallies per window
- 8 GPI contacts, can be configured for tally or ASCII protocol
- Borders can be turned on or off
- One 32 characters label per window
- Text and background colors have adjustable transparency
- Safe area markers
- Visual Alarm tags for audio and video presence
- Dynamic (TSL) UMD/Label
- Stereo analog audio monitoring output
- HDMI and SDI outputs have embedded stereo audio pair
- 5 year limited warranty



OPENGEAR

OG-Micro-Single

OG-Micro-Single-RMx



Rear Module (2 slots)

- 1 x BNC Input
- 2 x BNC loop out
- 1 x BNC output
- 1 x RJ45 (Extended HDMI Output)
- 1 x RJ50 for GPI/Tally
- 1 x 3-pin connector for AA out

Standard Accessories

- RJ50 to DB9 (for GPI)
- DB9 to Terminal Block (for GPI)
- 1 x 15 ft CAT6 cable
- 1 x RJ45 to HDMI (HDMI-SR)
- 1 x RJ45 to DVI (DVI-SR)

Optional Accessories for RMx

HDMI-1-R

Active HDMI Receiver that supports 1080p resolution up to 115 ft /35m

How to Order

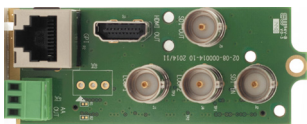
OG-Micro-Single-SET-1

OG-Micro-Single-MB + OG-Micro-Single-RM

OG-Micro-Single-SET-2

OG-Micro-Single-MB + OG-Micro-Single-RMx

OG-Micro-Single-RM



Rear Module (2 slots)

- 1 x BNC Input
- 2 x BNC loop out
- 1 x BNC output
- 1 x HDMI Output
- 1 x RJ50 for GPI/Tally
- 1 x 3-pin Connector for AA Out

Standard Accessories

- RJ50 to DB9 (for GPI)
- DB9 to Terminal Block (for GPI)

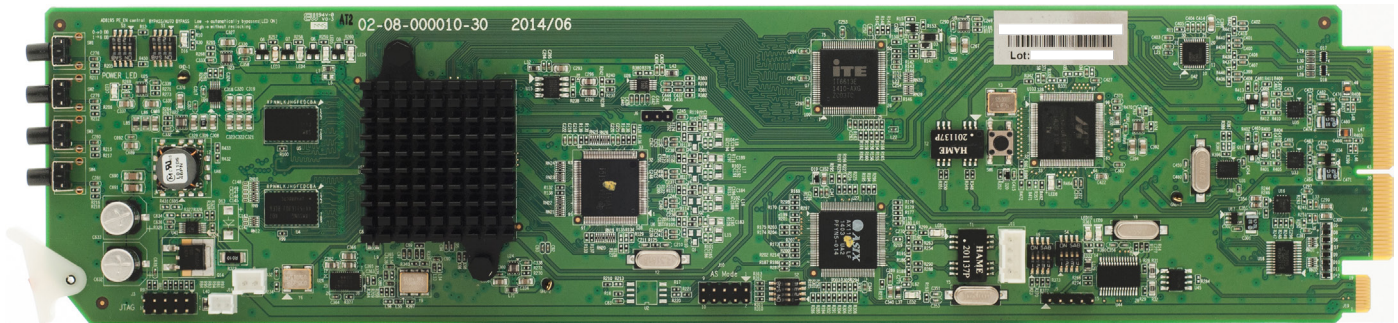
Specifications

Total Windows	1	Output	2 x SDI loopout, 1 x HDMI/DVI, 1 x SDI
Inputs	3G/HD/SD-SDI/Composite	HDMI (OG-Micro-Single-RM)	800x480 to 1920x1200 (1080p) 50/59.94/60Hz
Serial Digital	SMPTE 424M 292M, 259M	RJ45 (OG-Micro-Single-RMx)	Up to 35 feet with passive receiver Up to 115 feet with active receiver (option: HDMI-1-R)
Equalization	120m at 2.97 Gbps, 140m at 1.48 Gbps, 400m at 270 Mbps with Belden 1694A	SDI	Matching the HDMI output resolution up to 3G
Return Loss	> 15db up to 1.485 Gbps, > 10db up to 3G	On Screen Display	Borders, Labels, Tallies, Audio meters, Alarm tags, Safe area markers
Embedded Audio	SMPTE-272M-A	GPI	8 for tally or AXP (ASCII command)
Composite	NTSC (SMPTE-170M), PAL (ITU624-2)	IP	100 Base-T, TSL, AXP_Lite protocol
Signal Level	1V nominal Power 12W	DC Offset	0V, + - 0.1V
Impedance	75 ohm	Return Loss	40db up to 5MHz

openGear

OG-Micro-UDX

SDI up/down/cross converter with HDMI output



OG-Micro-UDX-MB

Key Features

- OGX/3.0 card-based form factor
- Dashboard control enabled
- Auto-detect 3G/HD/SD-SDI, PAL/NTSC inputs
- Low power consumption - 12W
- Single frame processing delay
- Decode up to 16 embedded audio per SDI input
- Ethernet for configuration
- Simultaneous SDI and HDMI outputs
- Stereo analog audio monitoring output
- HDMI output has up to 8 channels of embedded audio
- SDI output has up to 16 channels of embedded audio
- 5 year limited warranty

OPENGEAR

OG-Micro-UDX

OG-Micro-UDX-RMx Rear Module



- 1 x BNC Input
- 2 x BNC loop out
- 1 x BNC output
- 1 x RJ45 (Extended HDMI Output)
- 1 x RJ50 for GPI/Tally
- 1 x 3-pin connector for AA out

Standard Accessories

- RJ50 to DB9 (for GPI)
- DB9 to Terminal Block (for GPI)
- 1 x 15 ft CAT6 cable
- 1 x RJ45 to HDMI (HDMI-SR)
- 1 x RJ45 to DVI (DVI-SR)

Optional Accessories for RMx

HDMI-1-R

Active HDMI Receiver that supports 1080p resolution up to 115 ft /35m

How to Order

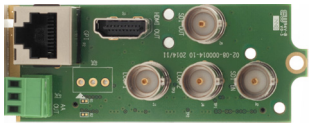
OG-Micro-UDX-SET-1

OG-Micro-UDX-MB +
OG-Micro-UDX-RM

OG-Micro-UDX-SET-2

OG-Micro-UDX-MB +
OG-Micro-UDX-RMx

OG-Micro-UDX-RM Rear Module



- 1 x BNC Input
- 2 x BNC loop out
- 1 x BNC output
- 1 x HDMI Output
- 1 x RJ50 for GPI/Tally
- 1 x 3-pin Connector for AA Out

Standard Accessories

- RJ50 to DB9 (for GPI)
- DB9 to Terminal Block (for GPI)

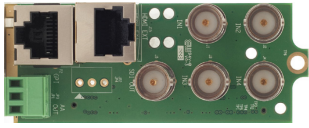
Specifications

Total Windows	1	Output	2 x SDI loopout, 1 x HDMI/DVI, 1 x SDI
Inputs	3G/HD/SD-SDI/Composite	HDMI (OG-Micro-UDX-RM)	800x480 to 1920x1200 (1080p) 50/59.94/60Hz
Serial Digital	SMPTE 424M 292M, 259M	RJ45 (OG-Micro-UDX-RMx)	Up to 35 feet with passive receiver Up to 115 feet with active receiver (option: HDMI-1-R)
Equalization	120m at 2.97 Gbps, 140m at 1.48 Gbps, 400m at 270 Mbps with Belden 1694A	SDI	Matching the HDMI output resolution up to 3G
Return Loss	> 15db up to 1.485 Gbps, > 10db up to 3G	IP	100 Base-T, TSL, AXP_Lite protocol
Embedded Audio	SMPTE-272M-A	Power consumption	12W
Composite	NTSC (SMPTE-170M), PAL (ITU624-2)		
Signal Level	1V nominal Power 12W	DC Offset	0V, + - 0.1V
Impedance	75 ohm	Return Loss	40db up to 5MHz

OPENGEAR

OG-Micro-4K

OG-Micro-4K-RMx



Rear Module (2 slots)

- 4 x BNC Input
- 1 x BNC Output
- 1 x RJ45 (Extended HDMI Output)
- 1 x RJ50 for GPI/Tally
- 1 x 3-pin Connector for AA Out

Standard Accessories

- RJ50 to DB9 (for GPI)
- DB9 to Terminal Block (for GPI)
- 1 x 15 ft CAT6 cable
- 1 x RJ45 to HDMI (HDMI-SR)

Optional Accessories for RMx

HDMI-1-R

Active HDMI Receiver that supports 1080p resolution up to 115 ft /35m

How to Order

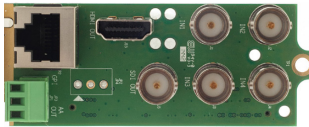
OG-Micro-4K-SET-1

OG-Micro-4K-MB +
OG-Micro-4K-RM

OG-Micro-4K-SET-2

OG-Micro-4K-MB +
OG-Micro-4K-RMx

OG-Micro-4K-RM



Rear Module (2 slots)

- 4 x BNC Input
- 1 x BNC Output
- 1 x HDMI Output
- 1 x RJ50 for GPI/Tally
- 1 x 3-pin Connector for AA Out

Standard Accessories

- RJ50 to DB9 (for GPI)
- DB9 to Terminal Block (for GPI)

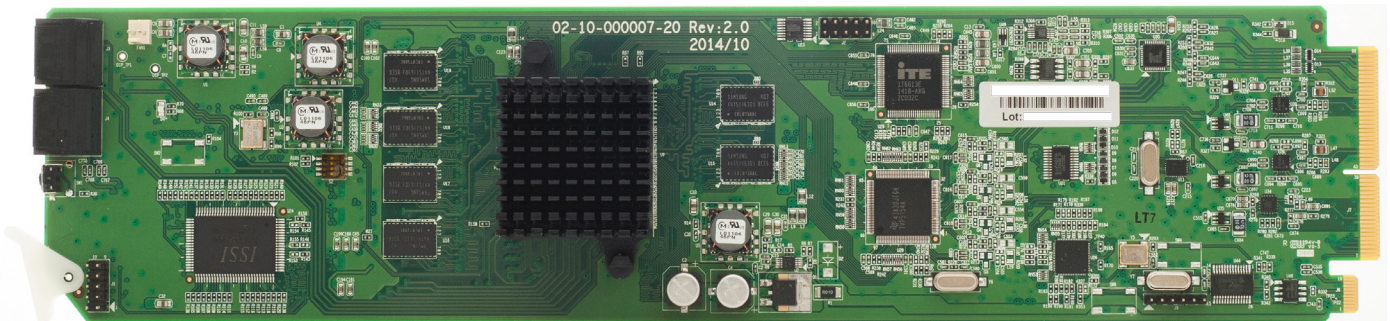
Specifications

Total Windows	1	Output	1 x HDMI/DVI, 1 x SDI
Inputs	4 x 3G-SDI	HDMI (OG-Micro-4K-RM)	800x480 to 1920x1200 (1080p) 50/59.94/60Hz
Serial Digital	SMPTE 424M	RJ45 (OG-Micro-4K-RMx)	Up to 35 feet with passive receiver Up to 115 feet with active receiver (option: HDMI-1-R)
Equalization	120m at 2.97 Gbps, with Belden 1694A	SDI	Matching the HDMI output resolution up to 3G
Return Loss	> 15db up to 1.485 Gbps, > 10db up to 3G	On Screen Display	Borders, Labels, Tallies, Audio meters, Alarm tags, Safe area markers
Embedded Audio	SMPTE-272M-A	GPI	8 for tally or AXP (ASCII command)

openGear

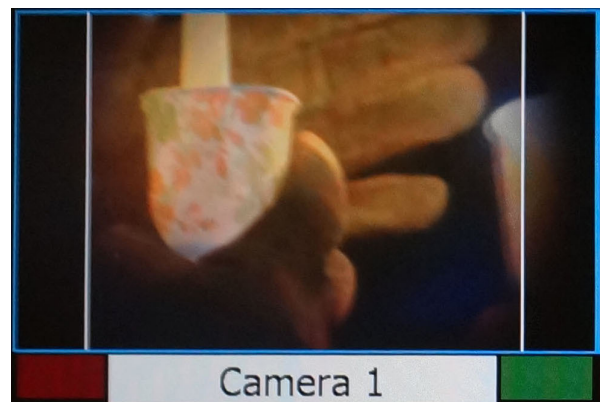
OG-Pinnacle

SDI to HDMI converter/scaler



Key Features

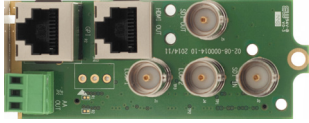
- OGX/3.0 card-based form factor
- Dashboard control enabled
- 3G/HD/SD-SDI to HDMI converter
- Built-in scaler/de-interlacer
- SDI output that matches HDMI output
- Analog audio monitoring output
- Embedded audio on HDMI output
- Selectable on-screen display (OSD) elements
- 16 channels of embedded audio
- Safe area markers
- Dynamic UMD (TSL)
- CC 608/708
- 2 GPI tallies per window
- 8 GPI contacts, can be configured for tally or ASCII protocol
- Borders can be turned on or off
- Visual Alarm tags for audio and video presence
- 5 year limited warranty



OPENGEAR

OG-Pinnacle

OG-Pinnacle-RMx



Rear Module (2 slots)

- 1 x BNC Input
- 2 x BNC loop out
- 1 x BNC output
- 1 x RJ45 (Extended HDMI Output)
- 1 x RJ50 for GPI/Tally
- 1 x 3-pin connector for AA out

Standard Accessories

- RJ50 to DB9 (for GPI)
- DB9 to Terminal Block (for GPI)
- 1 x 15 ft CAT6 cable
- 1 x RJ45 to HDMI (HDMI-SR)
- 1 x RJ45 to DVI (DVI-SR)

Optional Accessories for RMx

HDMI-1-R

Active HDMI Receiver that supports 1080p resolution up to 115 ft /35m

How to Order

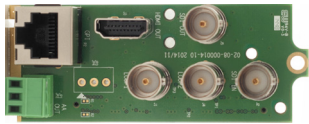
OG-Pinnacle-SET-1

OG-Pinnacle-MB +
OG-Pinnacle-RM

OG-Pinnacle-SET-2

OG-Pinnacle-MB +
OG-Pinnacle-RMx

OG-Pinnacle-RM



Rear Module (2 slots)

- 1 x BNC Input
- 2 x BNC loop out
- 1 x BNC output
- 1 x HDMI Output
- 1 x RJ50 for GPI/Tally
- 1 x 3-pin Connector for AA Out

Standard Accessories

- RJ50 to DB9 (for GPI)
- DB9 to Terminal Block (for GPI)

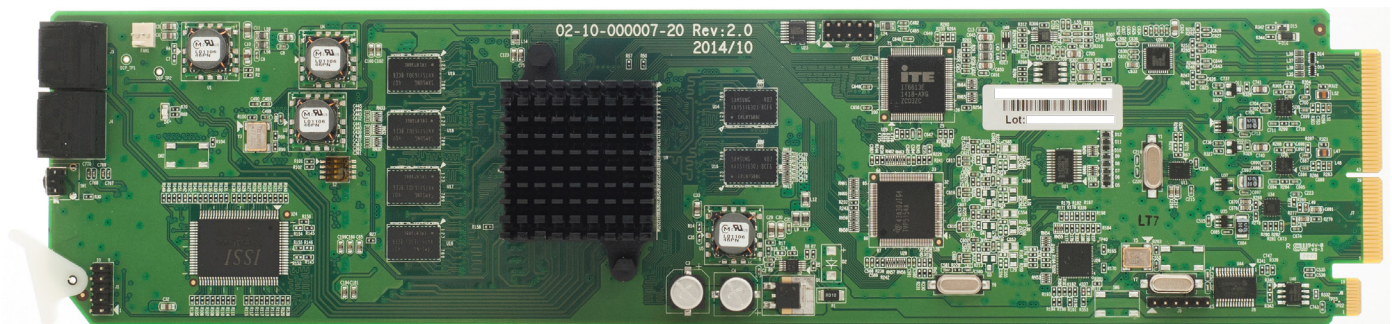
Specifications

Total Windows	1	Output	1 x HDMI/DVI, 1 x SDI
Inputs	3G/HD/SD-SDI/Composite	HDMI (OG-MiniQ-RM)	800x480 to 1920x1200 (1080p) 50/59.94/60Hz
Serial Digital	SMPTE 424M 292M, 259M	RJ45 (OG-MiniQ-RMx)	Up to 35 feet with passive receiver Up to 115 feet with active receiver (option: HDMI-1-R)
Equalization	120m at 2.97 Gbps, 140m at 1.48 Gbps, 400m at 270 Mbps with Belden 1694A	SDI	Matching the HDMI output resolution up to 3G
Return Loss	> 15db up to 1.485 Gbps, > 10db up to 3G	On Screen Display	Borders, Labels, Tallies, Audio meters, Alarm tags, Safe area markers
Embedded Audio	SMPTE-272M-A	GPI	8 for tally or AXP (ASCII command)
Composite	NTSC (SMPTE-170M), PAL (ITU624-2)	IP	100 Base-T, TSL, AXP_Lite protocol
Signal Level	1V nominal	DC Offset	0V, + - 0.1V
Impedance	75 ohm	Return Loss	40db up to 5MHz

openGear

OG-Pinnacle-C

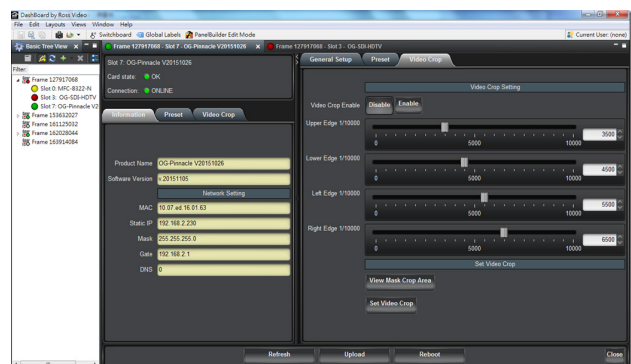
SDI to HDMI converter/scaler with region of interest



OG-Pinnacle-C-MB

Key Features

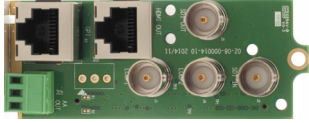
- OGX/3.0 card-based form factor
- Dashboard control enabled
- 3G/HD/SD-SDI to HDMI converter/scaler with loudness monitoring
- Built-in scaler/de-interlacer
- SDI output that matches HDMI output
- Analog audio monitoring output
- Embedded audio on HDMI output
- Selectable on-screen display (OSD) elements
- 16 channels of embedded audio
- Safe area markers
- Dynamic UMD (TSL)
- CC 608/708
- 2 GPI tallies per window
- 8 GPI contacts, can be configured for tally or ASCII protocol
- Borders can be turned on or off
- Visual Alarm tags for audio and video presence
- 5 year limited warranty



OPENGEAR

OG-Pinnacle-C

OG-Pinnacle-L-RMx Rear Module (2 slots)



- 1 x BNC Input
- 2 x BNC loop out
- 1 x BNC output
- 1 x RJ45 (Extended HDMI Output)
- 1 x RJ45 for GPI/Tally
- 1 x 3-pin connector for AA out

Standard Accessories

- RJ50 to DB9 (for GPI)
- DB9 to Terminal Block (for GPI)
- 1 x 15 ft CAT6 cable
- 1 x RJ45 to HDMI (HDMI-SR)
- 1 x RJ45 to DVI (DVI-SR)

Optional Accessories for RMx

HDMI-1-R

Active HDMI Receiver that supports 1080p resolution up to 115 ft /35m

How to Order

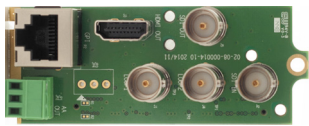
OG-Pinnacle-L-SET-1

OG-Pinnacle-L-MB +
OG-Pinnacle-L-RM

OG-Pinnacle-L-SET-2

OG-Pinnacle-L-MB +
OG-Pinnacle-L-RMx

OG-Pinnacle-L-RM Rear Module (2 slots)



- 1 x BNC Input
- 2 x BNC loop out
- 1 x BNC output
- 1 x HDMI Output
- 1 x RJ45 for GPI/Tally
- 1 x 3-pin Connector for AA Out

Standard Accessories

- RJ50 to DB9 (for GPI)
- DB9 to Terminal Block (for GPI)

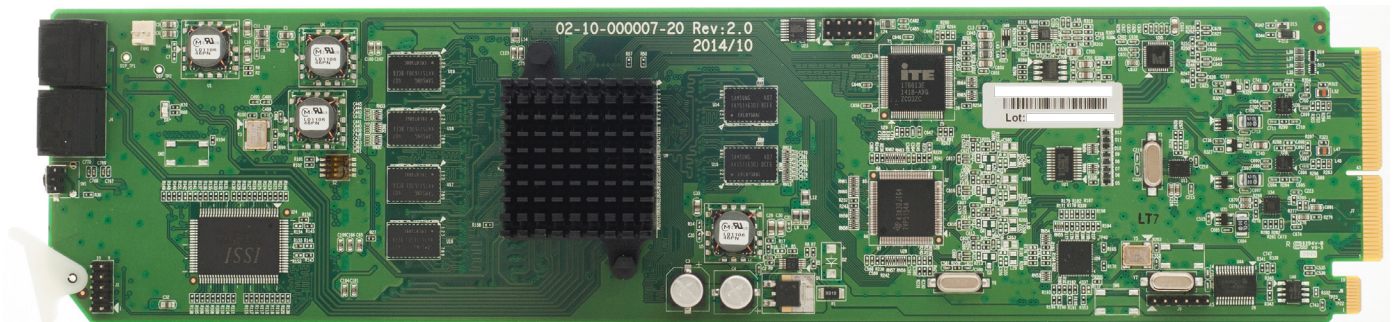
Specifications

Total Windows	1	Output	1 x HDMI/DVI, 1 x SDI
Inputs	3G/HD/SD-SDI/Composite	HDMI (OG-MiniQ-RM)	800x480 to 1920x1200 (1080p) 50/59.94/60Hz
Serial Digital	SMPTE 424M 292M, 259M	RJ45 (OG-MiniQ-RMx)	Up to 35 feet with passive receiver Up to 115 feet with active receiver (option: HDMI-1-R)
Equalization	120m at 2.97 Gbps, 140m at 1.48 Gbps, 400m at 270 Mbps with Belden 1694A	SDI	Matching the HDMI output resolution up to 3G
Return Loss	> 15db up to 1.485 Gbps, > 10db up to 3G	On Screen Display	Borders, Labels, Tallies, Audio meters, Alarm tags, Safe area markers
Embedded Audio	SMPTE-272M-A	GPI	8 for tally or AXP (ASCII command)
Composite	NTSC (SMPTE-170M), PAL (ITU624-2)	IP	100 Base-T, TSL, AXP_Lite protocol
Signal Level	1V nominal	DC Offset	0V, + - 0.1V
Impedance	75 ohm	Return Loss	40db up to 5MHz

openGear

OG-Pinnacle-L

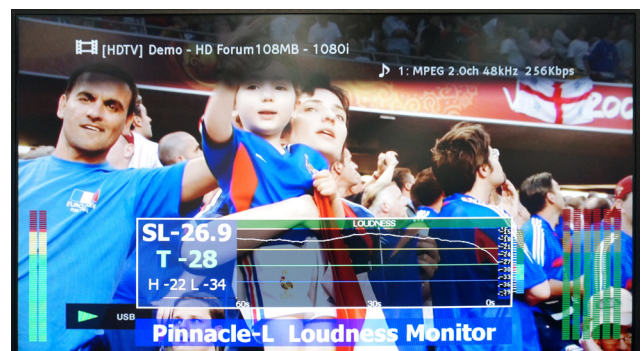
SDI to HDMI converter/scaler with loudness monitoring



OG-Pinnacle-L-MB

Key Features

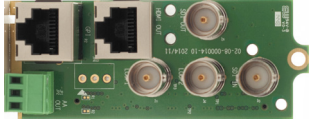
- OGX/3.0 card-based form factor
- Dashboard control enabled
- 3G/HD/SD-SDI to HDMI converter/scaler with loudness monitoring
- Built-in scaler/de-interlacer
- SDI output that matches HDMI output
- Analog audio monitoring output
- Embedded audio on HDMI output
- Selectable on-screen display (OSD) elements
- 16 channels of embedded audio
- Safe area markers
- Dynamic UMD (TSL)
- CC 608/708
- 2 GPI tallies per window
- 8 GPI contacts, can be configured for tally or ASCII protocol
- Borders can be turned on or off
- Visual Alarm tags for audio and video presence
- 5 year limited warranty



OPENGEAR

OG-Pinnacle-L

OG-Pinnacle-L-RMx Rear Module (2 slots)



- 1 x BNC Input
- 2 x BNC loop out
- 1 x BNC output
- 1 x RJ45 (Extended HDMI Output)
- 1 x RJ45 for GPI/Tally
- 1 x 3-pin connector for AA out

Standard Accessories

- RJ50 to DB9 (for GPI)
- DB9 to Terminal Block (for GPI)
- 1 x 15 ft CAT6 cable
- 1 x RJ45 to HDMI (HDMI-SR)
- 1 x RJ45 to DVI (DVI-SR)

Optional Accessories for RMx

HDMI-1-R

Active HDMI Receiver that supports 1080p resolution up to 115 ft /35m

How to Order

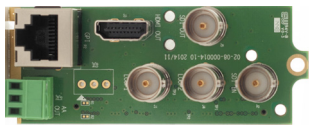
OG-Pinnacle-L-SET-1

OG-Pinnacle-L-MB +
OG-Pinnacle-L-RM

OG-Pinnacle-L-SET-2

OG-Pinnacle-L-MB +
OG-Pinnacle-L-RMx

OG-Pinnacle-L-RM Rear Module (2 slots)



- 1 x BNC Input
- 2 x BNC loop out
- 1 x BNC output
- 1 x HDMI Output
- 1 x RJ45 for GPI/Tally
- 1 x 3-pin Connector for AA Out

Standard Accessories

- RJ50 to DB9 (for GPI)
- DB9 to Terminal Block (for GPI)

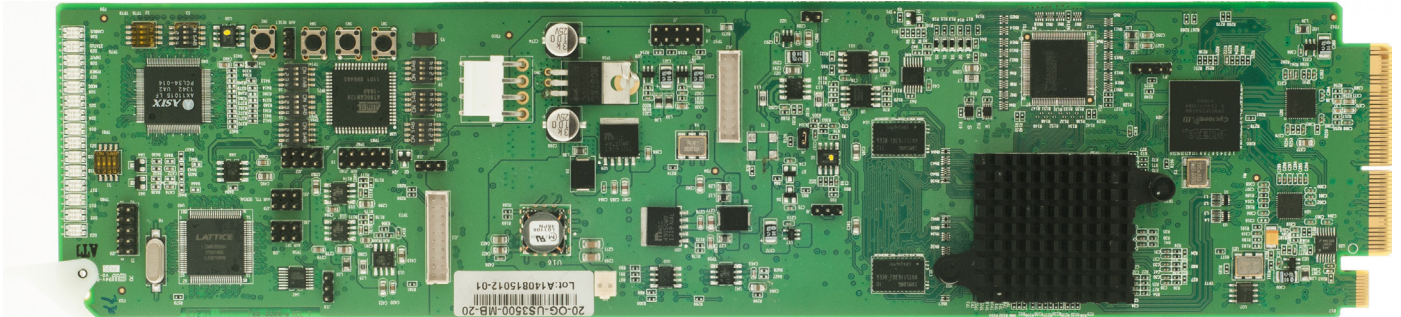
Specifications

Total Windows	1	Output	1 x HDMI/DVI, 1 x SDI
Inputs	3G/HD/SD-SDI/Composite	HDMI (OG-MiniQ-RM)	800x480 to 1920x1200 (1080p) 50/59.94/60Hz
Serial Digital	SMPTE 424M 292M, 259M	RJ45 (OG-MiniQ-RMx)	Up to 35 feet with passive receiver Up to 115 feet with active receiver (option: HDMI-1-R)
Equalization	120m at 2.97 Gbps, 140m at 1.48 Gbps, 400m at 270 Mbps with Belden 1694A	SDI	Matching the HDMI output resolution up to 3G
Return Loss	> 15db up to 1.485 Gbps, > 10db up to 3G	On Screen Display	Borders, Labels, Tallies, Audio meters, Alarm tags, Safe area markers
Embedded Audio	SMPTE-272M-A	GPI	8 for tally or AXP (ASCII command)
Composite	NTSC (SMPTE-170M), PAL (ITU624-2)	IP	100 Base-T, TSL, AXP_Lite protocol
Signal Level	1V nominal	DC Offset	0V, + - 0.1V
Impedance	75 ohm	Return Loss	40db up to 5MHz

openGear

OG-US-3500

Universal Scan Converter/Scaler with Genlock



OG-US-3500-MB

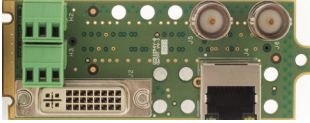
Key Features

- OGX/3.0 card-based form factor
- Dashboard control enables
- Supports HDMI/DVI/YPbPr/CVBS input
- Stereo analog audio input
- Dual SDI outputs
- Supports Genlock via openGear frame
- Low power consumption
- Output: 720P, 480/576P, 480i/576i, 1080i, 1080P
- Output frequency: 25, 29.97, 30, 50, 59.94 and 60Hz
- 5 year limited warranty

OPENGEAR

OG-US-3500

OG-US-3500RM



Rear Module (2 slots)

- 1x DVI-U input
- 2x SDI outputs
- 1x analog audio input (3 Pin)
- 1x RS-232 Input (3 Pin)

Standard Accessories

- 1x VGA-DVI-U adapter
- 1x HDMi-DVI-U adapter
- 1x YPbPr-DVI-U adapter

How to Order

OG-US-3500-SET-1

OG-US-3500-MB +
OG-US-3500-RM

Related Products

OGX-FR-CN-P

openGear X frame with
advanced network card

OG-US-4000-SET-1

openGear based Universal
Scaler with genlock

OG-DA-HDTV-SDI-II-SET-1

openGear based HDMI to SDI
converter without scaler

OG-SDI-HDTV-SET-1

openGear based SDI to HDMI
converter without scaler

Specifications

Input	HDMI, DVI, VGA, YPbPr, Composite	Output	2 x SDI
Control	Dashboard	Genlock	Analog black burst via BNC

Supported Input Resolution for DVI_RGB, DVI_444, DVI_422, HDMI 8bit_RGB, HDMI 8bit_444, HDMI 8bit_422

800x600@60Hz	1024x768@60Hz	1280x768@60Hz	1280x800@60Hz
1280x960@60Hz	1280x1024@60Hz	1360x768@60Hz	1366x768@60Hz
1440x900@60Hz	1400x1050@60Hz	1600x1200@60Hz	1680x1050@60Hz
720x480i@59.94Hz (No DVI)	720x576i@50Hz (No DVI)	720x480P@59.94Hz	720x576P@50Hz
1280x720@50/60Hz	1920x1080i@ 50/60Hz	1920x1080P@50/60Hz	

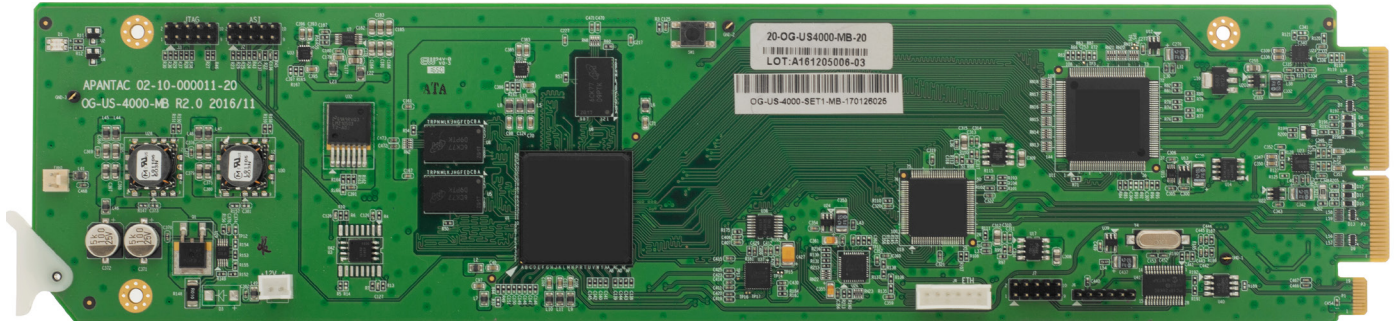
Supported Input Resolution for DVI, HDMI 8/10 bit RGB/YPbPr

640x480@60 Hz	800x600@60Hz	1024x768@60Hz	1280x720@60Hz
1280x768@60Hz	1280x800@59.94Hz	1280x960@60Hz	1280x1024@60Hz
1360x768@60Hz	1440x900@60Hz	1400x1050@60Hz	1600x1200@60Hz
1680x1050@60Hz	1920x1200 (RGB)	1920x1080@60Hz	

openGear

OG-US-4000

Bi-directional Universal Scaler with Genlock



OG-US-4000-MB

Key Features

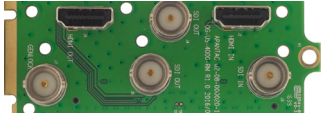
- OGX/3.0 card-based form factor
- Dashboard control enabled
- Supports HDMI and SDI inputs
- Supports HDMI and SDI outputs
- Supports 8 channels of HDMI audio to SDI and vice versa
- Supports Genlock via openGear frame
- Scales any SDI input resolution to HDMI and SDI
- Scales any HDMI input resolutions to HDMI and SDI
- SDI output supports 720P, 480/576i, 1080i/P in 23.98, 24, 25, 29.97, 30, 50, 59.94 and 60Hz
- HDMI output support 720P, 480/576i, 480/576P, 1080i/P in 50 and 60Hz
- Low power consumption
- 5 year limited warranty

OPENGEAR

OG-US-4000

OG-US-4000-RM

Rear Module (2 slots)



- 1 x HDMI input
- 1 x SDI input
- 1 x HDMI output
- 1 x SDI output
- 1 x Genlock

How to Order

OG-US-4000-SET-1

OG-US-4000-MB +

OG-US-4000-RM

Related Products

OGX-FR-CN-P

openGear X frame with advanced network card

OG-US-3000-SET-1

openGear based Universal Scaler without genlock

OG-US-3500-SET-1

openGear based Universal Scaler with genlock

OG-DA-HDTV-SDI-II-SET-1

openGear based HDMI to SDI converter without scaler

OG-SDI-HDTV-SET-1

openGear based SDI to HDMI converter without scaler

Specifications

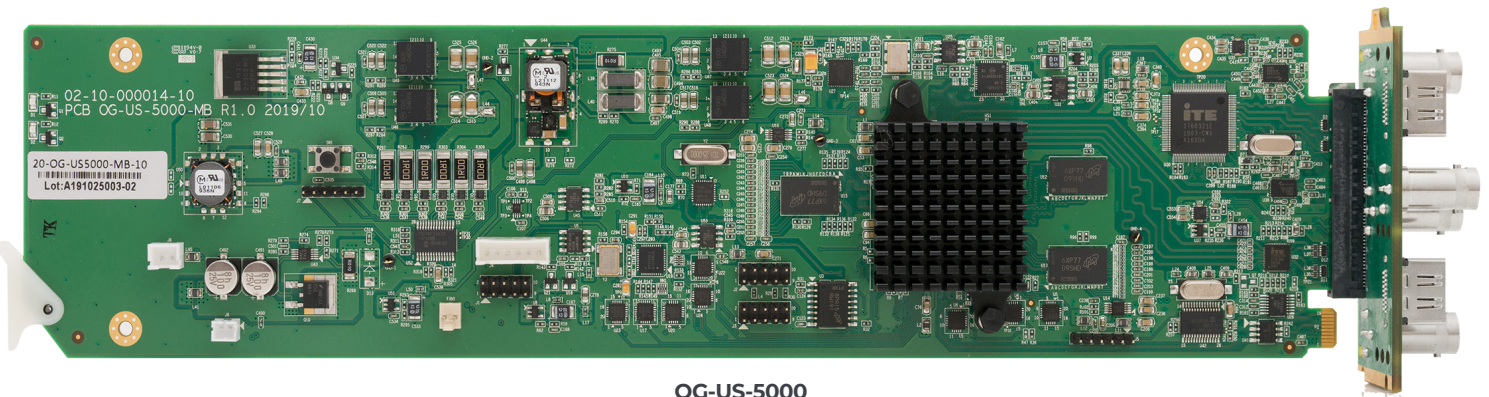
Input	HDMI and SDI	Output	HDMI and SDI
Control	Dashboard	Genlock	Analog black burst via BNC

Supported Input Resolution for DVI, HDMI 8/10 bit RGB/YPbPr			
640x480@60 Hz	800x600@60Hz	1024x768@60Hz	1280x720@60Hz
1280x768@60Hz	1280x800@60Hz	1280x960@60Hz	1280x1024@60Hz
1360x768@60Hz	1366x768@60Hz	1440x900@60Hz	1400x1050@60Hz
1680x1050@60Hz	720x480i@59.94Hz	720x576i@50Hz	720x480P@59.94Hz
720x576P@50Hz	1280x720@50/60Hz	1920x1080i@ 50/60Hz	1920x1080P@50/60Hz
1600x1200@60Hz, 1920x1200, 1152x864 NOT SUPPORTED			

openGear

OG-US-5000

UHD (HDMI 2.0 and 12G SDI) Bi-directional Universal Scaler with Genlock



OG-US-5000

Key Features

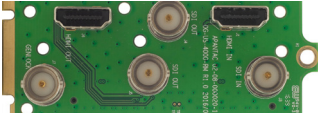
- OGX/OG3 card-based form factor
- Dashboard control enabled
- Supports HDMI 2.0 and 12G SDI inputs
- Supports HDMI 2.0 and 12G SDI outputs
- Supports 8 channels of HDMI audio to SDI and vice versa
- Supports Genlock via openGear frame
- Scales any SDI input resolution to HDMI and SDI
- Scales any HDMI input resolutions to HDMI and SDI
- SDI output supports 720P, 480/576i, 1080i/P, 2160P in 29.97, 30, 50, 59.94 and 60Hz
- HDMI output support 720P, 480/576i, 480/576P, 1080i/P, 2160P in 30, 50 and 60Hz
- Low power consumption - < 25W
- 5 year limited warranty

OPENGEAR

OG-US-5000

OG-US-5000-RM

Rear Module (2 slots)



- 1 x HDMI input
- 1 x SDI input
- 1 x HDMI output
- 1 x SDI output
- 1 x Genlock

How to Order

OG-US-5000-SET-1

OG-US-5000-MB +

OG-US-5000-RM

Related Products

OGX-FR-CN-P

openGear X frame with advanced network card

OG-US-4000-SET-1

openGear based bi-directional Universal Scaler

OG-US-3500-SET-1

openGear based Universal Scaler with genlock

OG-DA-HDTV-SDI-II-SET-1

openGear based HDMI to SDI converter without scaler

OG-SDI-HDTV-SET-1

openGear based SDI to HDMI converter without scaler

Specifications

Input	HDMI and SDI	Output	HDMI and SDI
Control	Dashboard	Genlock	Analog black burst via BNC

openGear

OG-DA-4HD-II

Triple-rate 1 x 4 SDI Distribution Amplifier

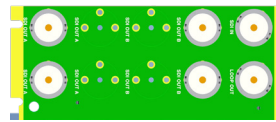


OG-DA-4HD-II-MB

Key Features

- openGear 3.0 card-based form factor
- Dashboard control enabled
- 1 x 4 triple rate reclocking SDI distribution amplifier with a passive loop out
- Reclockers can be turned on or off
- SMPTE 424M/292M/344M/259M compliant
- Data rates: 125 Mbps to 2.97 Gbps
- Equalizes up to 120 meters at 2.97 Gbps, 140 meter at 1.485 Gbps or 400 meters at 270 meters
- Supports DVB-ASI on outputs 1 and 3
- 5 year limited warranty

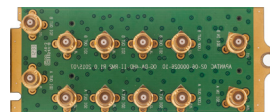
OG-DA-4HD-II-RM



Rear Module (2 slots)

- 1 x SDI input
- 1 x passive loop out
- 4 x SDI outputs

OG-DA-4HD-II-RM2



Rear Module (2 slots)

- 2 x SDI input
- 2 x passive loop outs
- 8 x SDI outputs

How to Order

- OG-DA-4HD-II-SET-1:** 1 x OG-DA-4HD-II-MB + 1 x OG-DA-4HD-II-RM
- OG-DA-4HD-II-SET-2:** 2 x OG-DA-4HD-II-MB + 1 x OG-DA-4HD-II-RM2

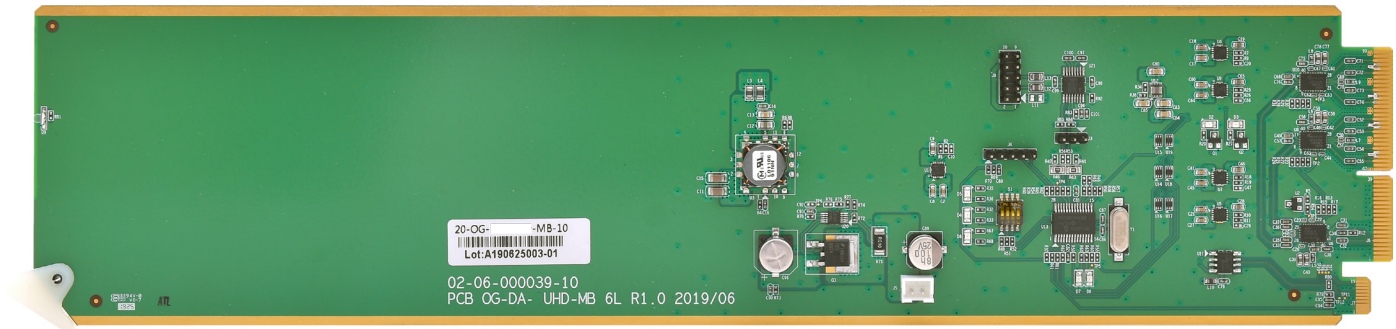
Specifications

OG-DA-4HD-II-SET-1 (1x4) - can fit 10 1x4 DAs in a 2 RU frame		OG-DA-4HD-II-SET-2 (2 x 1x4) - can fit 20 1x4 DAs in a 2 RU frame	
Inputs	1 x SDI	Inputs	2 x SDI
Loop out	1 x SDI	Loop outs	2 x SDI
Outputs	4 x SDI	Outputs	8 x SDI
Control	Dashboard		

openGear

OG-DA-4UHD

1 x 4 12G/6G/3G/HD/SD-SDI Distribution Amplifier

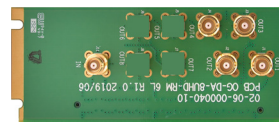


OG-DA-4UHD-MB

Key Features

- openGear 3.0 card-based form factor
- Dashboard control enabled
- 1 x 4 12G/6G/3G/HD/SD-SDI reclocking SDI distribution amplifier
- 4 reclocked outputs
- Supports ASI on outputs 1 and 3
- Cable Reach - 12G (70m), 6G (100m), 3G (140m)
- Auto detect 12G/6G/3G/HD/SD-SDI
- 5 year limited warranty

OG-DA-4UHD-RM



Rear Module (2 slots)

- 1 x SDI input
- 4 x SDI output

How to Order

OG-DA-4UHD-SET-1: 1 x OG-DA-4UHD-MB + 1 x OG-DA-4UHD-RM

Specifications

OG-DA-4UHD-SET-1 (1x4) - can fit 10 1x4 DAs in a 2 RU frame	
Input	1 x SDI
Loop out	N/A
Outputs	4 x SDI
Control	Dashboard

openGear

OG-DA-8HD-II

Triple-rate 1 x 8 SDI Distribution Amplifier

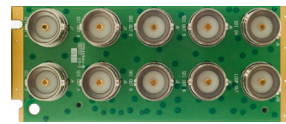


OG-DA-8HD-II-MB

Key Features

- OGX/3.0 card-based form factor
- Dashboard control enabled
- 8 x triple rate reclocking SDI distribution amplifier with a passive loop out
- Reclockers can be turned on or off
- SMPTE 424M/292M/344M/259M compliant
- Data rates: 125 Mbps to 2.97 Gbps
- Equalizes up to 120 meters at 2.97 Gbps, 140 meter at 1.485 Gbps or 400 meters at 270 meters
- Supports DVB-ASI at 270 Mbps on outputs 1, 3, 5, 7
- 5 year limited warranty

OG-DA-8HD-II-RM



Rear Module (2 slots)

- 1 x SDI input
- 1 x passive loop out
- 4 x SDI outputs

How to Order

OG-DA-8HD-II-SET-1: 1 x OG-DA-8HD-II-MB + 1 x OG-DA-8HD-II-RM

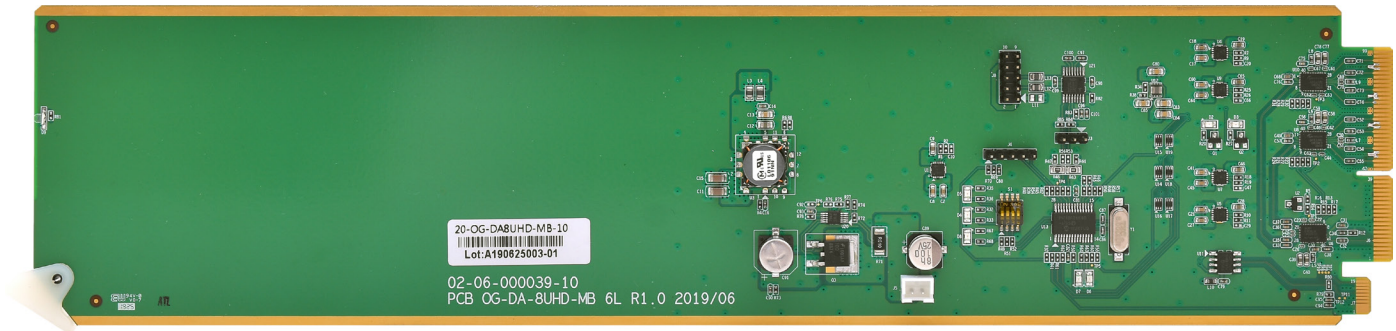
Specifications

OG-DA-4HD-II-SET-1 (1x4) - can fit 10 1x4 DAs in a 2 RU frame	
Input	1 x SDI
Loop out	1 x SDI
Outputs	8 x SDI
Control	Dashboard

openGear

OG-DA-8UHD

1 x 8 12G/6G/3G/HD/SD-SDI Distribution Amplifier

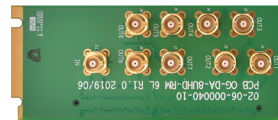


OG-DA-8UHD-MB

Key Features

- OGX/3.0 card-based form factor
- Dashboard control enabled
- 1 x 8 12G/6G/3G/HD/SD-SDI reclocking SDI distribution amplifier
- 8 reclocked outputs
- Supports DVB-ASI on outputs 1, 3, 5, 7
- Cable Reach - 12G (70m), 6G (100m), 3G (140m)
- Auto detect 12G/6G/3G/HD/SD-SDI
- 5 year limited warranty

OG-DA-8UHD-RM



Rear Module (2 slots)

- 1 x SDI input
- 8 x SDI output

How to Order

OG-DA-8UHD-SET-1: 1 x OG-DA-8UHD-MB + 1 x OG-DA-8UHD-RM

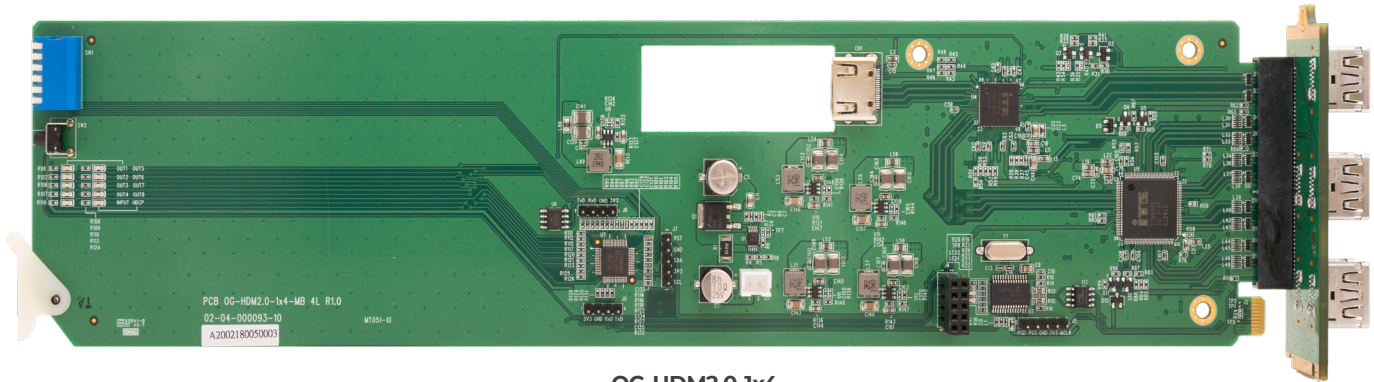
Specifications

OG-DA-8UHD-SET-1 (1x8) - can fit 10 1x8 DAs in a 2 RU frame	
Input	1 x SDI
Loop out	N/A
Outputs	8 x SDI
Control	Dashboard

openGear

OG-HDM2.0-1x4

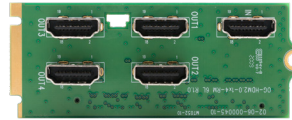
1x4 HDMI 2.0 Splitter/Distribution Amplifier



Key Features

- OGX/3.0 card-based form factor
- Dashboard control enabled
- Supports 4K/UHD 24/25/30/50/60Hz
- Supports HDMI 2.0/HDCP 2.2/HDCP 1.4
- Patent Pending Intelligent EDID management Technology (iDOT™) that supports built-in down scaler, chroma re-sampler and color space conversion
- Supports LPCM, Dolby True HD and Dolby Digital
- Cascadable for input expansion up to 8 levels
- 5 year limited warranty

OG-HDM2.0-1x4-RM Rear Module (2 slots)



1 x HDMI input
4 x HDMI outputs

How to Order

OG-HDM2.0-1x4-SET-1: 1 x OG-HDM2.0-1x4-MB + 1 x OG-HDM2.0-1x4-RM

Specifications

Model	HDM2.0-1x4-II		
Input	1 x HDMI	Resolution	4Kx2K(UHD)@60(4:4:4, 8 bit)/(4:2:0, 12bit)
Outputs	4 x HDMI	Cable distance	10m max (33 ft)
HDCP	HDCP 1.4/2.2	Dynamic Range	HDR/SDR, 4:4:4, 4:2:2
Color Space	BT 601, 709 and 2020	Audio Support	LPCM, Dolby True HD, Dolby Digital/Plus.EX, DTS, DTS-HD master
LED	Front panel indicator		

OPENGEAR

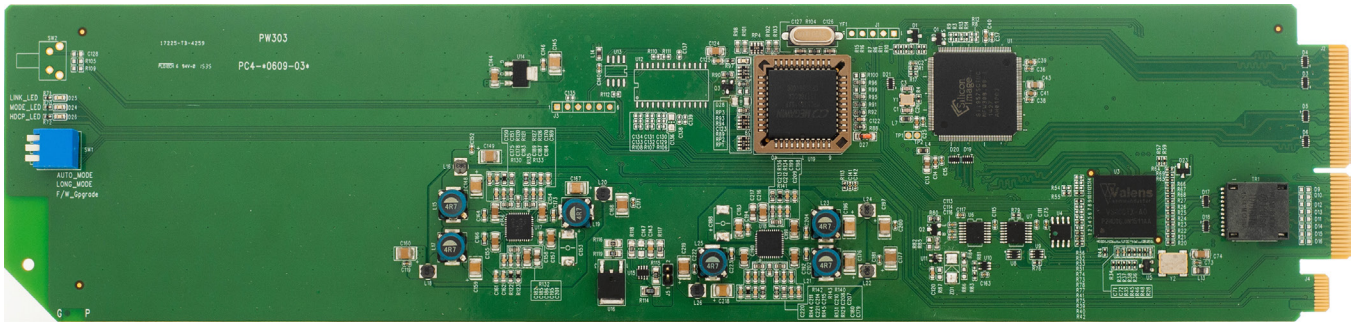
HDBaseT Products

- OG-HDBT-EAPx - HDBaseT transmitter 64
- OG-HDBT-Rx - HDBaseT Receiver 65

openGear

OG-HDBT-EAPx

HDMI extender based on HDBaseT

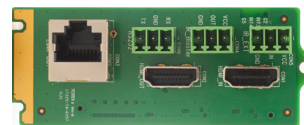


OG-HDBT-EAPx-MB

Key Features

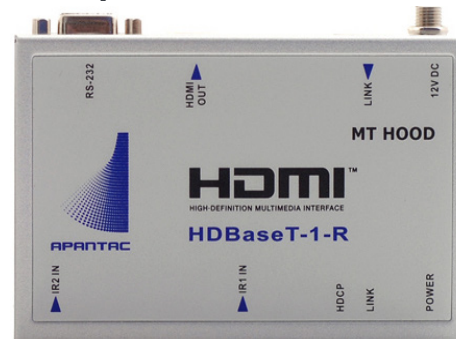
- OGX/3.0 card-based form factor
- Dashboard control enabled
- HDMI extender with HDBaseT technology
- Uses a single CAT 5E/6 cable
- Supports HDMI, DVI formats, 1080P, HD, 3D
- 1 x HDMI input
- 1 x HDMI loop out
- Cable reach up to 330 ft/100m
- Compatible with OG-HDBT-Rx, HDBT-1-R, HDBT-1-Rs, HDBT-1-R-II, HDBT-1-Rs-II
- Full audio support, infrared and RS232 pass through
- Low power consumption - 10W
- 5 year limited warranty

OG-HDBT-EAPx-RM Rear Module (2 slots)



- 1 x HDMI input
- 2 x HDMI loop out
- 1 x RJ-45 output

Example Receiver



HDBT-1-R

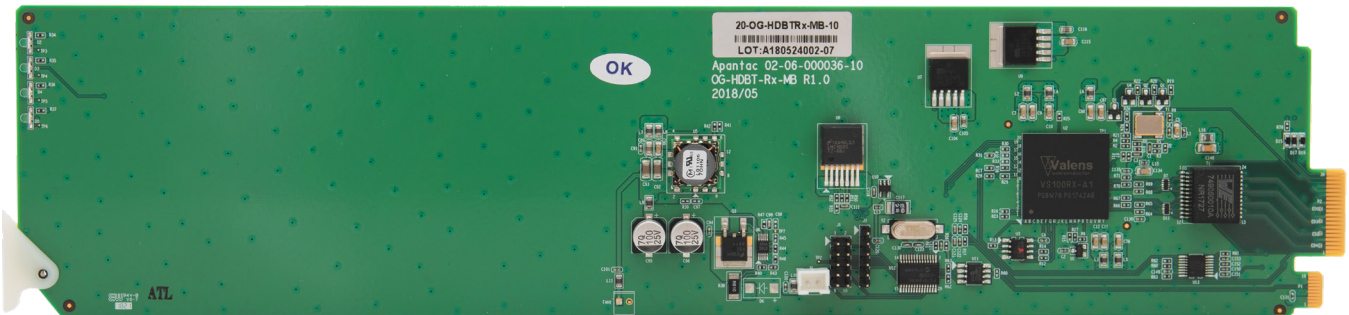
Specifications

Input	1 x HDMI	Output	RJ-45 (HDBaseT)
Control	Dashboard, IR, RS-232	Loop out	1 x HDMI

openGear

OG-HDBT-Rx

HDMI receiver based on HDBaseT

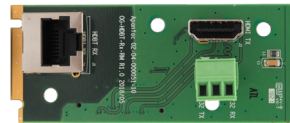


OG-HDBT-Rx-MB

Key Features

- OGX/3.0 card-based form factor
- Dashboard control enabled
- HDMI receiver with HDBaseT technology
- Uses a single CAT 5E/6 cable
- Supports HDMI, DVI formats, 1080P, HD, 3D
- 1 x HDMI output
- Cable reach up to 330 ft/100m
- Compatible with OG-HDBT-EAPx, HDBT-1-E, HDBT-1-Es, HDBT-1-E-II, HDBT-1-Es-II
- Full audio support, infrared and RS232 pass through
- Low power consumption - 10W
- 5 year limited warranty

OG-HDBT-Rx-RM



Rear Module (2 slots)

- 1 x RJ45 input
- 1 x HDMI output
- 1 x RS-232

Specifications

Input	1 x RJ45	Output	1 x HDMI
Control	Dashboard, RS-232		

About Us

Apantac is a leading designer and developer of high quality and cost effective multiviewers, video walls, matrices, extenders, and signal processing equipment. The Apantac product line has been specifically designed to provide users with flexible and innovative technology solutions for the broadcast and ProAV industries.

The Apantac product line includes; Multiviewers, video walls, extenders, switches, splitters, matrices, fiber optic extenders, HDBaseT solutions, as well as various video processors. These products are sold globally through direct selling channels, a growing network of dealers, system integrators, OEM's and various other partners.

Contact Information

Headquarters

10200 SW Allen Blvd. Suite C.
Beaverton, OR 97005
USA
T: +1 503 968 3000
F: +1 503 389 7921
E: info@apantac.com

US West Coast

T: +1 714 815 7421
F: +1 714 879 3079
E: Bill.Gray@apantac.com

US East Coast

T: +1 814 238 2365
M: +1 814 753 0000
E: Dave.Campbell@apantac.com

APAC

T: +1 503 968 3000
F: +1 503 389 7921
E: APAC_sales@apantac.com

EMEA

T: +33 6 2483 0742
E: Michel.Rudelle@apantac.com
Skype: michel-rudelle

LATAM

T: +52 1 55 1010 8292
F: +1 503 389 7921
E: edgar.flores@apantac.com

Japan

T: +81 90 1843 7628
E: Hiroo.Sasaki@apantac.com

China

T: +86 10 8795 5211
M: +86 1391 093 0624
E: Jumping.Zhao@apantac.com

South East APAC

T: +65 9006 1497
F: +1 503 389 7921
E: aniket.rangnekar@apantac.com



APANTAC

Contact Information

Headquarters

10200 SW Allen Blvd
Suite C
Beaverton, OR 97005.
USA

T: +1 503 968 3000
F: +1 503 389 7921
E: info@apantac.com

US WEST

T: +1 714 815 7421
F: +1 714 879 3079
E: Bill.Gray@apantac.com

US EAST

T: +1 814 238 2365
M: +1 814 753 0000
E: Dave.Campbell@apantac.com

NORTH ASIA

T: +1 503 968 3000
E: APAC_sales@apantac.com

EMEA

T: +33 6 2483 0742
E: Michel.Rudelle@apantac.com
Skype: michel-rudelle

LATAM

T: +52 55 10108292
F: +1 503 389 7921
E: edgar.flores@apantac.com

ASEAN

T: +65 9006 1497
F: +1 503 389 7921
E: aniket.rangnekar@apantac.com
Skype: aniketr.sg

CHINA

T: +86 10 8795 5211
M: +86 1391 093 0624
E: Jumping.Zhao@apantac.com

JAPAN

T: +81 90 1843 7628
E: Hiroo.Sasaki@apantac.com

About Us

Apantac is a leading designer and developer of high quality and cost effective multiviewers, video walls, matrices, extenders, and signal processing equipment.

Find us on:   



www.apantac.com