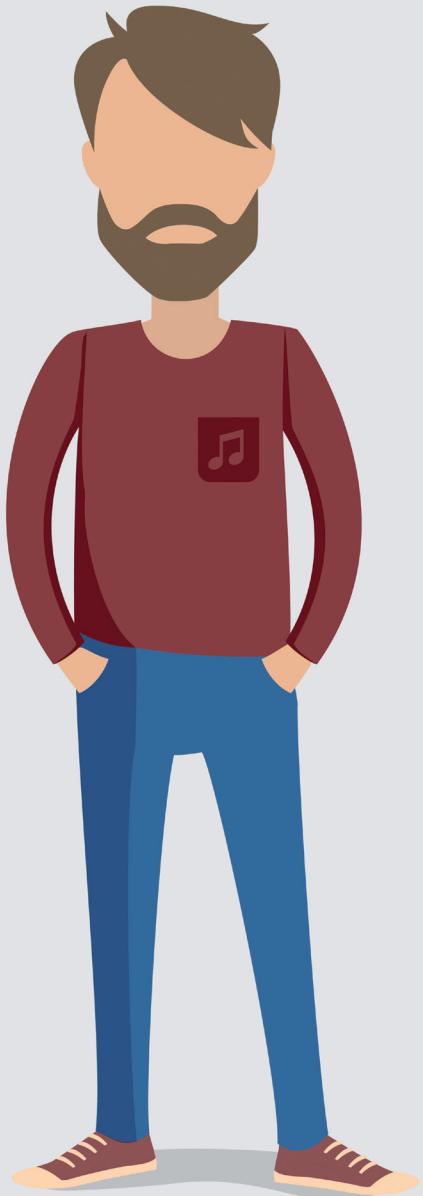
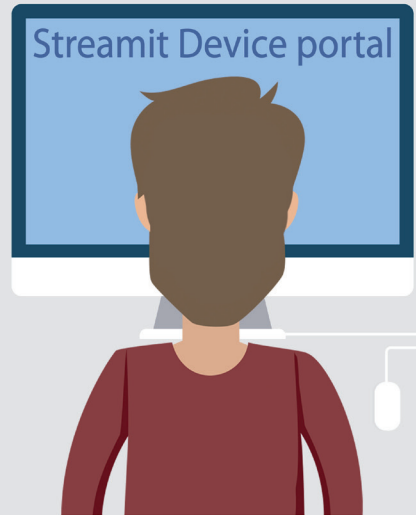


STREAMIT

Lisa Quick Start Guide

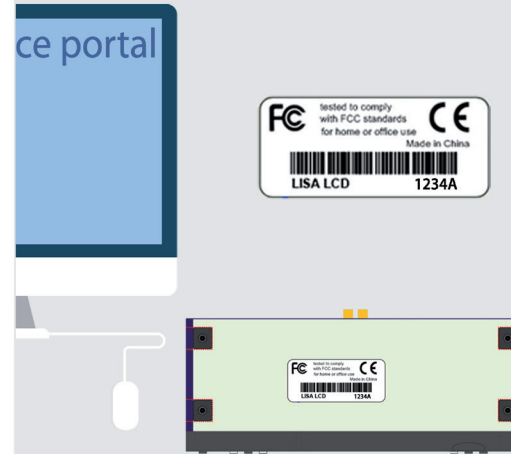


1. Sign in on Device Portal



1. Find the email you received: 'Streamit portal account created'
2. Click on the link in the email
3. Follow the instructions

2. Register your Lisa



1. Find the serial number on the Lisa device
2. Click on 'Add a new audio device'
3. Enter the serial number
4. Click 'Save' (you can edit the rest later)

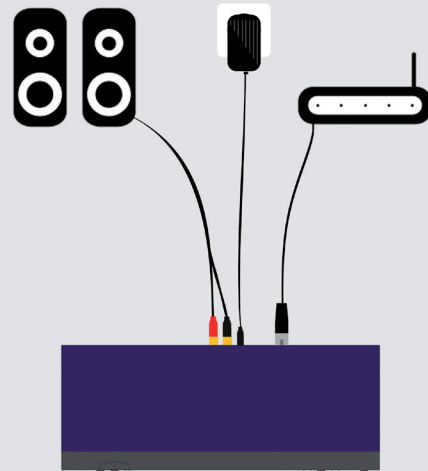
3. Assign presets*



1. Click on + of a stream to make it a preset

*This is done automatically for your first Lisa!

4. Connect the Lisa



1. Insert the audio cable to connect the Lisa to your computer speaker set or amplifier
2. Insert the network cable to connect the Lisa to the internet (DHCP required)
3. Insert the power cable to start the Lisa
4. Lisa LCD: Follow the wizard and select audio source 'Internet'

5. Enjoy the music!



If you have questions



Contact Streamit support: support@streamit.eu

More information or different use case:
- Read the Lisa User manual
- Read the Device portal manual